

**Project Name:** UNIVERSITY OF CALIFORNIA, MERCED  
EMERGENCY EYEWASH CORRECTION

**Project No.:** 907024

**ADDENDUM NO. 2**  
to the  
**CONTRACT DOCUMENTS**  
**October 29, 2018**

- I. Bidder acknowledges that it is the Bidder's responsibility to ascertain whether any Addenda have been issued and if so, to obtain copies of such Addenda. Bidder therefore agrees to be bound by all Addenda that have been issued for this bid.

This Addendum forms a part of the Contract Documents and modifies the original Bidding Documents. The following changes, additions, or deletions shall be made to the following documents as indicated and all other Contract Documents shall remain the same.

**II. CLARIFICATIONS**

- A. PRE-BID QUESTIONS – Questions received from bidders and responses are as follows: NONE

**III. BIDDING/CONTRACT DOCUMENTS AND DIVISION 1 SPECIFICATIONS – VOLUME 0**

1. Revise Section 01 33 23 Shop Drawings, Product Data and Samples: All code references are 2016. Section included in this Addendum.
2. Revise Section 01 41 00 Regulatory Requirements: Revised MSDS to read SDS. Section included in this Addendum.

**V. DRAWINGS**

- |              |                                                                                                                                                                |
|--------------|----------------------------------------------------------------------------------------------------------------------------------------------------------------|
| Sheet<br>002 | General Note 09 corrected typo.                                                                                                                                |
| 002          | General Note 27 corrected typo.                                                                                                                                |
| 002          | Added Inspection Note 7 – Inspection and commissioning of all installations are to be witnessed by the DCFM and UCM Fire and Building Safety AHJ.              |
| 002          | Added Inspection Note 8 – Standard for installation and commissioning of emergency eye wash and emergency shower equipment shall comply with ANSI/ISEA Z358.1. |
| 007          | Added General Note 3 – All emergency eye wash, face wash and shower units shall be installed to comply with Chapter 11B of the C.B.C “Barrier Free”.           |

008 Revised Detail 3 – Replace or Modify clips with code compliant solution. Contractor to provide detail for approval prior to installation.

008 Revised Detail 7 – Lower existing shower head between 82” and 96” above finish floor per Z358.1

VI. **ATTACHMENTS**

1 Specification Section 01 33 23

Specification Section 01 41 00

2 Drawing Sheets 002 – 009

**UNIVERSITY OF CALIFORNIA, MERCED**

**By: University of California, Merced**

---

**Fran Telechea**  
**Director of Construction**

**End of Addendum No. 2**

**ADDENDUM 02**  
**SECTION 01 33 23**  
**SHOP DRAWINGS, PRODUCT DATA AND SAMPLES**

PART 1 - GENERAL

1.1 REQUIREMENTS INCLUDED

- A. Shop Drawings, Product Data, and Samples shall be submitted to the University's Representative only in connection with proposed substitutions or when specifically required by the Specifications. Contractor will, however, be required to certify in writing that materials to be provided will be as specified by individual Specification Sections. The University's Representative will not review any other such submittals. Product Data and Samples for proposed substitutions shall be submitted to University's Representative in accordance with Section 01 25 00 Product Options and Substitutions. Contractor shall be responsible for obtaining copies of Shop Drawings, Product Data, and Samples as it may require for its own use.

1.2 RELATED REQUIREMENTS

A. Definitions

- 1. The terms "Shop Drawings" and "Product Data" as used herein also include, but are not limited to fabrication, erection, layout and setting drawings, manufacturers' standard drawings, descriptive literature, catalogues, brochures, performance and test data, wiring and control diagrams as well as all other drawings and descriptive data pertaining to materials, equipment, piping, duct, conduit systems, and methods of construction as required to show that the materials, equipment, or systems and the positions thereof conform to the Contract Documents.
- 2. As used herein, the term "manufactured" applies to standard units usually mass-produced. The term "fabricated" means items specifically assembled or made out of selected materials to meet individual design requirements. Shop Drawings shall establish the actual detail of all manufactured or fabricated items, indicate proper relationship to adjoining Work, and amplify design details of mechanical and electrical equipment in proper relationship to physical spaces in the structure.

B. Manufacturer's Instructions

- 1. Where any item of Work is required by the Contract Documents to be furnished, installed, or performed in accordance with a specified product manufacturer's instructions, General Contractor shall procure and distribute the necessary copies of such instructions to the University's Representative and the General Contractor shall furnish, install, or perform the Work in strict accordance therewith.

C. Submittal Schedule

- 1. The minimum time required by University's Representative and University's Design Professional to review and process Shop Drawings, Product Data and Samples shall be 18 days after receipt.
- 2. The Contractor shall submit a schedule for submission of Shop Drawings, Product Data, and Samples (the "Submittal Schedule"). The schedule shall

include the Contractor's time to process the submittal(s), and the time required for review by the University's Representative and University's Design Professional. The schedule shall be agreed upon by the University's Representative, the University's Design Professional, and the Contractor in order that submittals will be available when needed by the construction process and so that each party can plan its workload in an orderly manner. All required submittals shall be initially submitted no later than 2 months after the Notice to Proceed.

3. Contractor shall prepare the Submittal Schedule in the form contained in the Submittal Schedule (Exhibit 6) and coordinate it with the Contract Schedule. No submittals will be processed prior to University's Representative and University's Design Professional receiving and approving the Submittal Schedule, unless an exception is made by the University's Representative.
4. In preparing the Submittal Schedule, the Contractor must first determine from the Contract Schedule the date the particular item is needed for the Work. Working backwards, the Contractor will add the required number of days for shipment, time for fabrication, and similar items to determine the date of the first submittal. Contractor shall be responsible for the impact to the schedule resulting from submittals that do not conform to contract requirements. Contractor shall make reasonable allowances in the Submittal Schedule for the re-submittal of items that do not conform to contract requirements.
5. The Submittal Schedule shall be adjusted to meet the needs of the construction process and the Contract Schedule. Submit 2 copies of the Submittal Schedule after it is completed and each time it is updated by the Contractor.

### 1.3 SHOP DRAWINGS

- A. Present information required on Shop Drawings in a clear and thorough manner. Identify details by reference to drawing and detail, schedule and/or room numbers shown and specified.
- B. The Contractor shall prepare Shop Drawings that comply with the Requirements of Section 01 78 39 Project As-Built Documents.

### 1.4 PRODUCT DATA

- A. Preparation
  1. Clearly mark each copy to identify pertinent products or models.
  2. Show performance characteristics and capacities.
  3. Show dimensions and clearances required.
  4. Show wiring or piping diagrams and controls.
- B. Manufacturer's standard schematic drawings and diagrams
  1. Modify the standard schematic drawings and other diagrams to delete information that is not applicable to the Work.
  2. Supplement standard information to provide information specifically applicable to the Work.
  3. Clearly indicate manufacturer's model or part number intended for Project.

C. ~~Material~~ Safety Data Sheets

1. ~~Material~~ Safety Data Sheets (~~MSDS~~) (**SDS**) shall be submitted for all hazardous substances so defined by the State of California. ~~MSDS~~ **SDS** shall also be provided for all substances furnished under this contract that are not available to the general public from retail outlets; e.g., paints, coatings, lacquers, varnishes, sealers, removers, thinners, solvents, adhesives, cleaners, acids, putty, fillers, disinfectants, fungicides, pesticides, gases, oils, lubricants, treatments, liquid-applied flooring, etc. **ADDENDUM 1**

1.5 SAMPLES

A. Samples shall be of sufficient size and quality to clearly illustrate the following:

1. Functional characteristics of the products with integrally related parts and attachment devices.
2. Full ranges of color, texture and pattern or as specified by the University's Representative.
3. Or as specified.

B. Field Samples and mock-ups

1. Erect at the Project site, at a location as directed by the University's Representative;
2. Size: As specified;
3. Fabricate each Sample and mock-up to be complete and fully finished;
4. Remove mock-ups at conclusion of the Work;
5. Or as specified.

1.6 LEED™ SUBMITTAL INFORMATION

A. All information noted in Section 01 81 13 LEED® Requirements shall be noted on Exhibit 49, LEED NC v3.0 Product Data Submittal Data Form of every submittal including , but not limited to:

1. Distance in miles from final assembly location to project site;
2. All recycled content information;
3. All FSC certified wood information;
4. All electric, natural gas and water efficiency information;
5. VOC and other LEED® related issues.

B. Any submittals not containing this information on the cover will be rejected.

1.7 CONTRACTOR'S REVIEW OF SUBMITTALS

- A. Review, edit as appropriate, and stamp Shop Drawings, Product Data, and Samples prior to submission. Submittals shall clearly show that they have been reviewed by the Contractor for conformance with the requirements of the Contract Documents and for coordination with other Sections. Contractor's stamp and signature shall indicate that the submittal has been reviewed by the Contractor for conformance with the Contract requirements. Submittals that do not comply with this paragraph shall not be reviewed.

- B. Determine and verify
  - 1. Field measurements.
  - 2. Field construction criteria.
  - 3. Catalog numbers and similar data.
  - 4. Conformance with Contract Documents.
- C. Coordinate each submittal with requirements of the Work and of the Contract Documents.
- D. Notify the University's Representative and University's Design Professional in writing, at time of submission, of any changes in the submittals from requirements of the Contract Documents.
- E. Do not proceed with fabrication or Work that requires submittal review approval.

## 1.8 SUBMITTAL REQUIREMENTS

- A. The Contractor shall:
  - 1. Submit items in a group or in a sequence which provide the University's Representative with sufficient information to review items of Work which require coordination with each other. Submissions that do not provide sufficient information to review items of Work requiring coordination with each other shall be returned to the Contractor for re-submittal.
  - 2. Submit submittals promptly in timely manner to avoid delay in the Work or in the Work of any Separate Contractor.
  - 3. Submit a completed Exhibit 23 Material Submittal Approval Form with every submittal.
  - 4. Submit new samples as required for initial submittal.
- B. Number of Submittals Required
  - 1. Shop Drawings: Submit 9 blue line reproductions and an electronic file of shop drawings to the University's Representative. The University's Representative shall return 1 blue line reproduction or an electronic copy with review comments to the Contractor. Verify Quantity Required.
  - 2. Project Data and Non-Reproducible Submittals: Submit 9 copies to the University's Representative. The University's Design Professional shall return 1 copy with review comments to the Contractor.
  - 3. Samples and Non-Reproducible Submittals: Submit number as specified in individual Specification Section(s) to University's Representative.
  - 4. University may require submittals to be submitted electronically in the format of AUTOCAD® (latest version available at date of Bid). Files must be ORIGINAL.DWG format. Electronic media must be CD-ROM. One set of original plots must be provided with the electronic media.
    - a. Drawings are to use a specified title block, orientation and north arrow provided by the University.
    - b. All actual Drawings are to be done on Model space and plot set up/title block are on Paper space.
    - c. Shop Drawing size should be 30"x42" unless is requested differently by the University's Representative.
    - d. All Cross references within the same AUTOCAD® Drawing must be bound.

C. Submittals shall contain:

1. A unique number. Follow Submittal Number with incremental alphabetical suffix as necessary for each resubmission. For example, the first submittal will be '001'. The second submittal will be '002'. The first resubmittal of submittal 002 will be '002A.'
2. Actual date of submission, date of submission as shown on Submittal Schedule, date response due, and dates of any previous submissions.
3. Project name and number.
4. Contract identification.
5. The names of:
  - a. Contractor.
  - b. Subcontractor.
  - c. Supplier.
  - d. Manufacturer.
  - e. Bid Package Number if applicable.
6. Identification of the product with the Specification Section number.
7. Field dimensions clearly identified as such.
8. Relation to adjacent or critical features of the Work or materials including interaction with work of other trades.
9. Reference standards such as American Society for Testing and Materials (ASTM) or Federal Specification (FS) numbers.
10. Identification of changes from requirements of the Contract Documents.
11. Identification of revisions on re-submittals. Note any departures from the Contract Documents or changes in previously reviewed submittals that were not commented upon by the University's Representative.
12. An 8 by 3 inch blank space for review stamps.
13. Contractor's stamp, initialed or signed, certifying to the review of the submittal; verification of materials field measurements and conditions; and compliance of the information within the submittal with requirements of the Work and of the Contract Documents.
14. Contractor shall submit submittal(s) with transmittal provided by the University's Representative.

D. Resubmission Requirements

1. Shop Drawings and Product Data
  - a. Note any departures from the Contract Documents or changes in previously reviewed submittals that were not commented upon by the University's Representative.
  - b. University's Representative and the University's Design Professional will review a total of 2 submittals for the same item at no cost to the Contractor. The cost for the review of more than 2 submittals of the same item shall be deducted from the Contract Sum.
2. Samples: Submit samples as required for review/approval.

E. Distribution

1. Reproduce and distribute copies of Shop Drawings and Product Data that carry the University's Representative's review stamp, to the following locations:
  - a. Contractor's Project site file.
  - b. Record documents file maintained by the Contractor.
  - c. Separate General Contractors.

- d. Subcontractors.
  - e. Supplier, manufacturer or fabricator.
  2. Distribute Samples that carry the University's Representative's review stamp as directed.
  3. Provide electronic copies of Shop Drawings and Product Data that have the final approved review stamp to the University's Representative for file.
- F. University's Representative and the University's Design Professional will review Contractor's submittals, such as Shop Drawings, Product Data and Samples, for the limited purpose of checking for conformance with information given and the design concept expressed in the Contract Documents. Review of such submittals is not conducted for the purpose of determining the accuracy and completeness of other details such as dimensions and quantities, or for substantiating instructions for installation or performance of equipment or systems, all of which remain the responsibility of the Contractor as required by the Contract Documents.

PART 2 - PRODUCTS (NOT USED)

PART 3 - EXECUTION (NOT USED)

END OF SECTION 01 33 23



**ADDEDUM 02**  
**SECTION 01 41 00**  
**REGULATORY REQUIREMENTS**

PART 1 - GENERAL

1.1 CODES, AGENCIES, AND REFERENCES

- A. The Work shall be performed in accordance with Applicable Code Requirements and applicable requirements of all other regulatory agencies, including, but not limited to, the following:
1. Americans with Disabilities Act - Title II.
  2. California Environmental Quality Act.
  3. California Health and Safety Code.
  4. National Fire Protection Association (NFPA).
  5. Federal Occupational Safety and Health Administration.
  6. Federal Clean Water Act, including but not limited to the Storm Water Pollution Prevention requirements.
  7. Federal Endangered Species Act.
  8. Federal Clean Air Act.
  9. Porter-Cologne Water Quality Act, State of California
  10. Endangered Species Act, State of California
  11. California Fish & Game Code, Section 1600, et. seq.
  12. Resource Conservation and Recovery Act (RCRA) and the California Hazardous Waste Control Law.
  13. Comprehensive Environmental Response and Cleanup Liability Act (CERCLA)
  14. California Building Code (CBC)

1.2 STANDARDS AND CODES

- A. Applicable laws, codes, rules, regulations, ordinances and standards
1. Code of Federal Regulations
    - a. Title 33, Navigation and Navigable Waters
    - b. Title 40, Protection of Environment
    - c. Title 50, Wildlife and Fisheries
  2. California Code of Regulations (CCR)
    - a. Title 8, Industrial Relations/Elevators
    - b. Title 14, Natural Resources

- c. Title 17, Public Health
  - d. Title 19, Public Safety
  - e. Title 20, Public Utilities and Energy
  - f. Title 21, Public Works
  - g. Title 22, Environmental Health
  - h. Title 23, Waters
  - i. Title 24, California Building Standards Code
    - 1) Part 2, California Building Code 2016
    - 2) Part 3, California Electric Code 2016
    - 3) Part 4, California Mechanical Code 2016
    - 4) Part 5, California Plumbing Code 2016
    - 5) Part 6, California Energy Code 2016
    - 6) Part 7, California Elevator Safety Construction Code 2016
    - 7) Part 9, California Fire Code 2016
    - 8) Part 11 California Green Building Standards Code 2016
    - 9) Part 12, California State Reference Standards 2016
  - j. Title 27 Environmental Protection 2007
3. San Joaquin Valley Air Pollution Control District Regulation #8 2016

### 1.3 REFERENCES

- A. Unless otherwise specified, specific references to codes, regulations, standards, manufacturers' instructions, or requirements of regulatory agencies, when used to specify requirements for materials or design elements, shall mean the latest edition of each in effect at the date of submission of bids, or the date of the Change Order (Exhibit 9) or Field Order (Exhibit 8), as applicable.

### 1.4 CONFLICTS

- A. Unless otherwise directed by the University's Representative, if a conflict exists between referenced regulatory requirements and the Contract Documents, the Contractor shall refer the matter to the University's Representative for further instruction.
- B. Nothing stated in this Section of the Specifications or other Sections of the Specifications, the other Contract Documents or the Bidding Documents or shown on the Drawings shall be construed as allowing Work that is not in strict compliance with all applicable Federal, State, regional, and local statutes, laws, regulations, rules, ordinances, codes and standards.

### 1.5 TRENCHING AND SHORING

- A. All Work shall be in full accordance, but not necessarily limited to the following codes and regulations: Titles as listed in Section 1.2 Standards and Codes above, State of California, California Code of Regulations (CCR), California Occupational Safety and Health Administration (OSHA).

1. Pursuant to Labor Code 6707, the General Contractor shall include in the bid all costs incident to the provisions of adequate sheeting, shoring, bracing or equivalent method for the protection of life or limb that shall conform to applicable Federal and State safety orders.
2. Before beginning any excavation 5 feet or more in depth, the Contractor shall submit to the University's Representative a detailed Drawing showing the design of shoring, bracing, sloping, or other provisions to be made for worker protection from the hazard of caving ground during the excavation. The proposed design shall comply with the standards established by the State of California Construction Safety Orders, Title 8 and Title 24 of the California Code of Regulations (CCR). If the design varies from such shoring system standards, the Drawing shall be prepared by a registered civil or structural engineer whose name and registration number shall be indicated on the Drawing. If a dispute arises as to whether the plan must be prepared by a registered civil or structural engineer, the University's Representative's determination of the matter shall be final and conclusive on the Contractor. The cost of required engineering services shall be borne by the Contractor and shall be deemed to have been included in the Contract Sum for the Work as stated in the Agreement.
3. Neither the review nor approval of any Drawing showing the design of shoring, bracing, sloping, or other provisions for worker protection, shall relieve the Contractor from the obligation to comply with construction State of California Construction Safety Order and Title 24 of the California Code of Regulations (CCR) for the design and construction of such protective Work, and the Contractor shall indemnify the University and the University's Representative from any and all claims, liability, costs, actions and causes of action arising out of or related to the failure of such protective systems. The Contractor shall defend the University, its officers, employees, Design Professional and agents and the University's Representative in any litigation or proceeding brought with respect to the failure of such protective systems.
4. All Work including any temporary construction shall be in full compliance with the latest orders of the Division of Industrial Safety of the State of California and all codes and regulations as called for hereinafter in these specifications.

#### 1.6 REGULATORY NOTIFICATIONS

- A. Submit all required notifications to Federal, State of California, State in which disposal facility is located if not in California, regional, and local agencies with regulatory responsibilities associated with the Work activities that are included in the Contract. All notifications shall be served in writing, in the form required by the agency requiring notification, and in a timely manner so as not to negatively impact the Project schedule. Serve notifications at least 10 working days in advance (or earlier if required by agency) of activity requiring notice. The Contractor shall serve all required notifications in writing to all governmental and quasi-government agencies having notification requirements pertaining to any portion of the Work included in the Project.
- B. Contractor shall comply with the State General Construction Activity Storm water Permit National Pollutant Discharge Eliminate System (NPDES) for the campus and comply with the University's Storm Water Pollution Prevention Plan.

1.7 NOTIFICATIONS, CERTIFICATES AND UNIFORM HAZARADOUS WASTE MANIFEST

A. Permits

1. Contractor will not be required to obtain a County of Merced building permit.

B. Fire Department

1. Contractor shall be responsible for issuing in writing to the University's Representative the following notifications prior to starting site Work:
  - a. Hazardous Condition Notification - Hot Work: must be coordinated before starting any hot work (welding, burning, or cutting, etc.) involving use of gas or electric welding equipment. Contractor shall report to the University's Representative, at the beginning and 30 minutes prior to the end of each shift that such "hot" work takes place
  - b. Hazardous Conditions Notification-General: for the storage or use of any flammable liquid in excess of 10 gallons or in any confined area where vapors can be ignited. The General Contractor shall report to the University's Representative at the beginning and 30 minutes prior to the end of each shift that such work takes place
  - c. Hazardous Condition Notification-Special Conditions: Coordinate in advance with the University's Representative before restricting access to or blocking of any building exit or Work that will require the shutdown of building fire protection or alarm systems. The General Contractor shall report to the University's Representative at the beginning and 30 minutes prior to the end of each shift that such work takes place
  - d. At the end of the Work, the Contractor must submit Automatic Sprinkler Systems-Material and Test Certificate for Aboveground Piping and Automatic Sprinkler Systems- Material and Test Certificate for Underground Piping for approval by the University (Exhibits 20 and 21). The Automatic Sprinkler underground and aboveground will not be accepted until these certificates have been completed and submitted.

- C. Prior to commencing clearing, excavation and trenching, Contractor shall locate all known existing installations before proceeding with construction operations that may cause damage to such installation. Existing installations shall be kept in service where possible and damage to them shall be repaired at no additional cost to the University.

- D. Uniform Hazardous Waste Manifest: Contractor shall be responsible for coordination with the University's Representative for obtaining a Uniform Hazardous Waste Manifest prior to removal of asbestos containing materials, polychlorinated biphenyl (PCB), or other hazardous materials from the Project site. Manifest will be provided by the University's Representative. Only the University's Representative will be allowed to sign individual manifests on behalf of the Contractor / University.

1.8 CIVIL OR CRIMINAL PENALTIES OR FINES

- A. Contractor shall be liable for the payment of any and all civil or criminal penalties or fines imposed by the U.S. Fish & Wildlife Service (USFWS), U.S. Army Corps of Engineers (USACE), California Department of Fish & Game (CDFG), Central Valley Regional Water

Quality Control Board (CVRWQCB) or any other applicable regulatory agency for Contractor's violations of the federal Endangered Species Act (ESA), Clean Water Act (CWA), California Endangered Species Act (CESA), Porter-Cologne Water Quality Control Act (Porter-Cologne); any regulation promulgated to implement said statutes; the UC Merced Biological Opinion; or any applicable authorization issued by the USFWS, USACE, CDFG, CVRWQCB, or other applicable federal, state or local regulatory agency.

- B. In the event Contractor is found liable for civil actions under the abovementioned statutes, regulations, permits or authorizations, Contractor shall be responsible for the payment of any civil penalties imposed by any applicable regulatory agency. Penalties may vary according to the applicable statute, including but not limited to, penalties of up to \$50,000 per day of violation of the CWA, \$25,000 for each ESA violation, and \$15,000 per day of violation of Porter-Cologne.
- C. In the event Contractor is convicted of criminal actions under the abovementioned statutes, regulations, permits or authorizations, Contractor shall be responsible for satisfying applicable terms of imprisonment and the payment of any criminal fines imposed by the regulatory agency. Fines may vary according to the applicable statute, including but not limited to, fines of \$250,000 per day of violation of the CWA, \$50,000 for each ESA violation, and \$15,000 per day of violation of Porter-Cologne.

PART 2 - PRODUCTS (NOT USED)

PART 3 - EXECUTION (NOT USED)

END OF SECTION 01 41 00

# Science and Engineering Building - Emergency Eyewash Correction



Science and  
Engineering  
Building  
Emergency  
Eyewash  
Correction

Building Number:  
0200

08/09/2018

10/10/2018 REBID

10/17/2018 ADD 1

10/29/2018 ADD 2

Key Plan:



Drawing Title

**COVER  
SHEET**

Drawing Number:

**001**



**General Notes:**

Unless otherwise indicated, all work shall be in strict accordance with all codes adopted and amended by the governing authority.

1. Shut down of utilities requires a 14 business day notification.
2. Contractor shall visit the job site and familiarize him/herself with all conditions which may have an effect on his/her work. Any discrepancies between the drawings and the actual conditions shall be immediately brought to the attention of the University.
3. The building shall conform to all state requirements for accessibility. All doors shall have min. clear openings of 32".
4. Drawings are not to be scaled for any reason. Dimensions shall govern.
5. Take field measurements as required. Discrepancies between drawings and field dimension shall be reported to the University prior to fabrication.
6. Provide attachment and connection devices and method necessary for securing work.
7. Visual effect: Provide uniform joint widths in exposed work. Arrange joints in exposed work to obtain the best visual effect. Refer joint layouts to the University for final decision.
8. It shall be the responsibility of the Contractor to notify the University of any conflicts herein prior to start of work on that item.

**2. 9. Were no specific standards are applied to a material or method of construction to be used in the work, all such materials and methods are to maintain standards of the industry.**

10. Materials, equip., etc. not indicated on drawings or specified herein but essential to the successful and efficient completion of the installation shall be furnished and installed.
11. Examine substrates and other conditions under finish materials for compliance w/ requirements for application of finish material. Do not begin application until unsatisfactory conditions have been corrected.
12. Building designed to support mechanical equip., ceilings, insulation and light fixtures. Contractor to comply with Division 01 - 01 73 23 for all attachment(s) to the building.
13. Manufacturer's instructions: comply with manufacturer's written installation instructions and recommendations to the extent that those instructions and recommendations are more explicit or stringent than requirements contained in contract documents.
14. Obtain each clarification of work from a single source as required in specifications.
15. These plans and related documents must be available at the job site during any inspection activity.
16. Provide all-weather access to all areas of the development during all phases of the construction.
17. The approval of these plans and specifications does not permit the violation of any section of the building code, municipal ordinances, or state laws.
18. Match existing finishes to the maximum extent feasible. If products specified in these drawings or specifications do not match existing adjacent products, submit an alternate to the University for approval.
19. Accessibility dependent upon Laboratory research. Not all work will be performed between the hours of 7am-5pm.
20. Work that requires a utility shut downs impacting a large area will require to be performed between the hours of 11pm-7am.
21. University to have first right of refusal of all removed equipment. Contractor to dispose of all equipment.
22. Photos provided are typical and not a representation of each location. Contractor to perform verification.
23. Exposed piping shall be clean, level and painted white.
24. There are no drains required within this project scope.
25. Contractor required to provide all supports, bracing, wall angles, etc. needed for installation.
26. There will be no flow or alarm devices required within this scope.

**2. 27. Remove and replace a minimum of (4) acoustical ceiling tiles as needed for plumbing installation of emergency showers. Provide (qty. 20) replacement ceiling tile for damage, match existing.**

28. Where ceiling is to be removed and replace: Contractor shall coordinate with the University and Carpenter Trade Package for the total tiles/grid removed and replaced. Contractor shall notify the University if greater than what is specified in the Scope of Work.
29. Contractor responsible for verification of code compliance for new or existing units when replacing or modifying.
30. Include 800 lineal feet of piping with fittings for total scope. Total at completion will result in a net add or credit of actual install.

**Governing Codes:**

- 2016 California Administrative Code
- 2016 California Building Code
- 2016 California Electrical Code
- 2016 California Mechanical Code
- 2016 California Plumbing Code
- 2016 California Energy Code

**Inspection:**

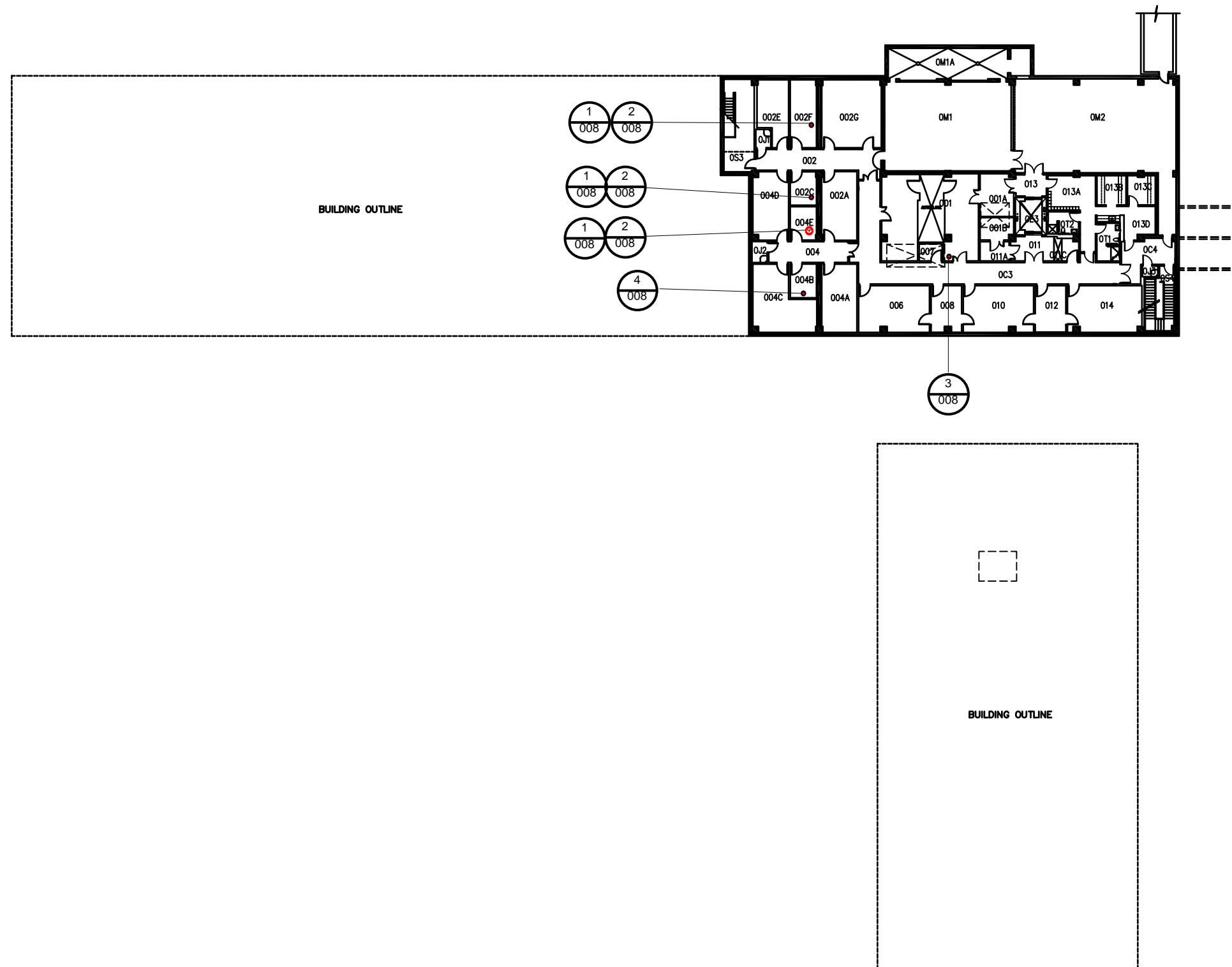
1. All materials delivered to the project shall be inspected prior to use on the construction site.
2. Inspection of rough framing, electrical, mechanical, drywall required prior to covering any work.
3. All inspection requests shall be scheduled on the inspection calendar.
4. Inspections shall be scheduled 24 hours prior to the date of inspection.
5. Special Inspections shall be scheduled 48 hours prior to the date of the inspection.
6. Torque testing required for any anchors into the concrete floors or ceilings. Inspector shall witness torque test.
- 7. Inspection and commissioning of all installations are to be witnessed by the DCFM and UCM Fire and Building Safety AHJ.**
- 8. Standard for installation and commissioning of emergency eye wash and emergency shower equipment shall comply with ANSI/ISEA Z358.1.**



**Drawing Index:**

001	COVER SHEET
002	GENERAL NOTES
003	BASEMENT LEVEL
004	FIRST FLOOR
005	SECOND FLOOR
006	THIRD FLOOR
007	PRODUCT DATA
008	SCOPE DETAILS
009	SCOPE DETAILS

Science and  
Engineering  
Building  
Emergency  
Eyewash  
Correction



SE1 - BASEMENT FLOOR PLAN

Building Number:  
0200

08/09/2018  
10/10/2018 REBID  
10/17/2018 ADD 1  
10/29/2018 ADD 2  
Key Plan:



Drawing Title

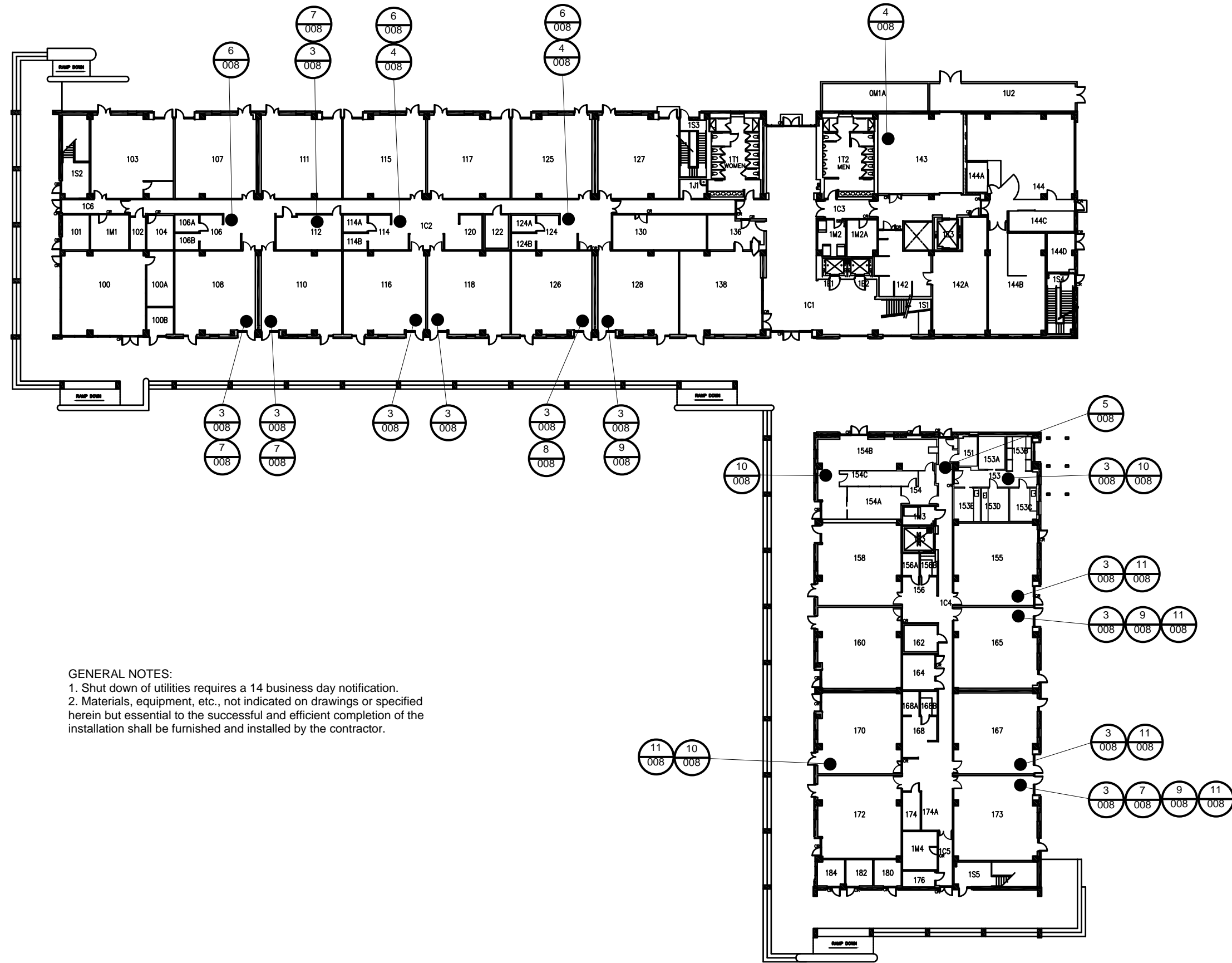
Basement

Drawing Number:

003



Science and  
Engineering  
Building  
Emergency  
Eyewash  
Correction



GENERAL NOTES:

1. Shut down of utilities requires a 14 business day notification.
2. Materials, equipment, etc., not indicated on drawings or specified herein but essential to the successful and efficient completion of the installation shall be furnished and installed by the contractor.

Building Number:  
0200

08/09/2018  
10/10/2018 REBID  
10/17/2018 ADD 1  
10/29/2018 ADD 2  
Key Plan:



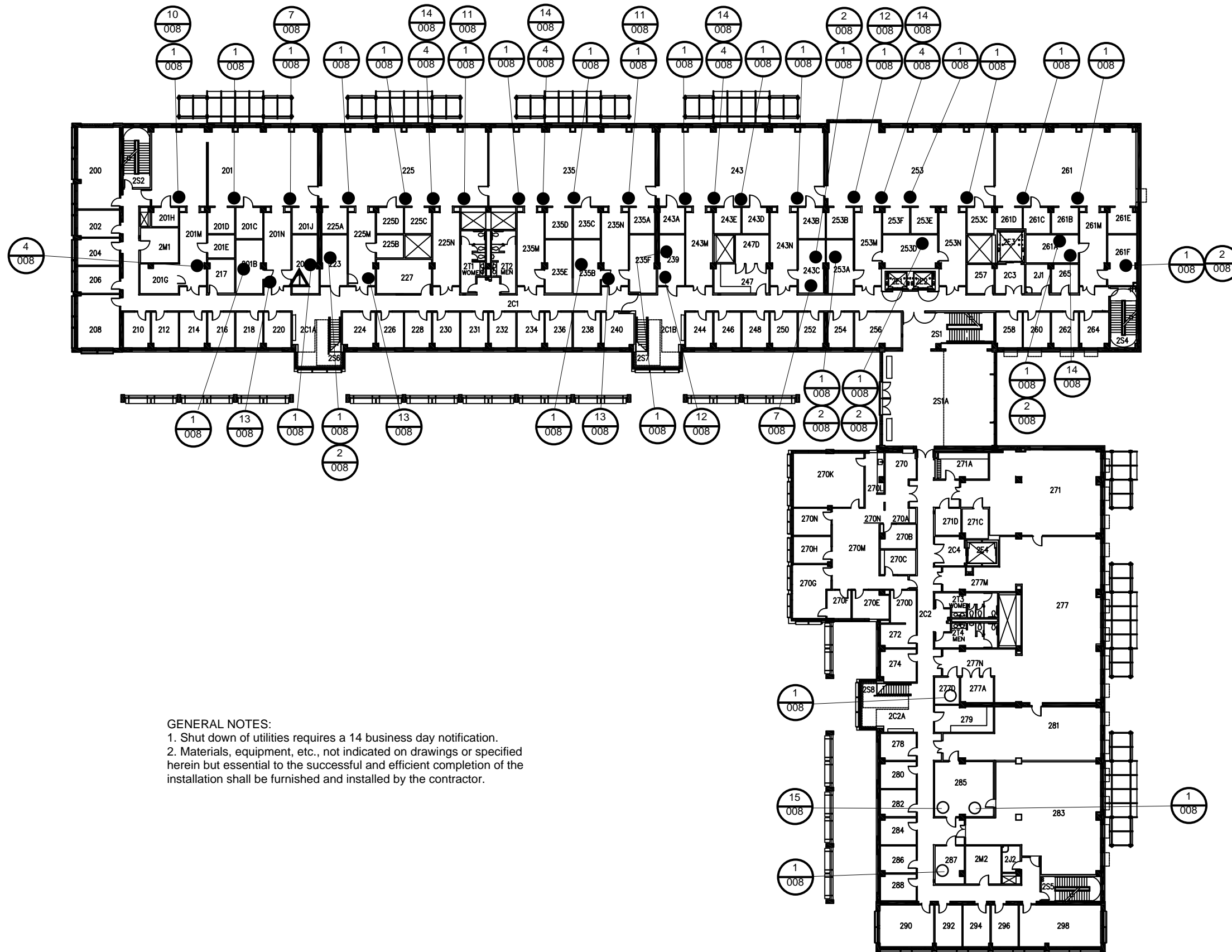
Drawing Title

First Floor

Drawing Number:

004

Science and Engineering Building  
Emergency Eyewash Correction



GENERAL NOTES:

- 1. Shut down of utilities requires a 14 business day notification.
- 2. Materials, equipment, etc., not indicated on drawings or specified herein but essential to the successful and efficient completion of the installation shall be furnished and installed by the contractor.

Building Number:  
0200

08/09/2018  
10/10/2018 REBID  
10/17/2018 ADD 1  
10/29/2018 ADD 2  
Key Plan:

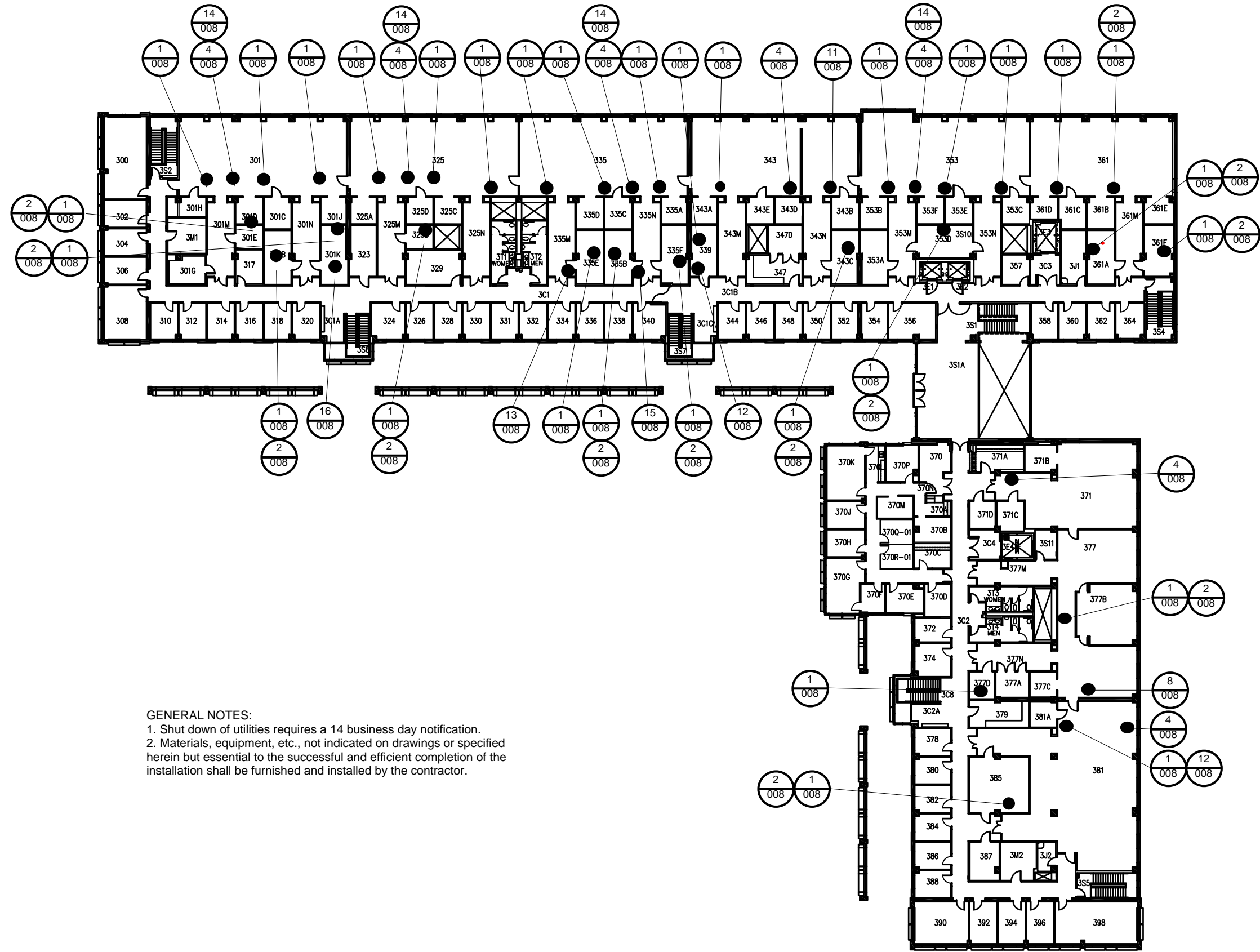


Drawing Title

**Second Floor**

Drawing Number:  
**005**

Science and  
Engineering  
Building  
Emergency  
Eyewash  
Correction



GENERAL NOTES:  
 1. Shut down of utilities requires a 14 business day notification.  
 2. Materials, equipment, etc., not indicated on drawings or specified herein but essential to the successful and efficient completion of the installation shall be furnished and installed by the contractor.

Building Number:  
0200  
 08/09/2018  
 10/10/2018 REBID  
 10/17/2018 ADD 1  
 10/29/2018 ADD 2  
 Key Plan:



Drawing Title  
**Third Floor**

Drawing Number:  
**006**



### S19314 Series Combination Drench Shower and Halo™ Eyewash or Eye/Face Wash

- Halo™ and SpinTec™ Deliver the Most Effective Shower and Eye/Face Washdown Coverage and Spray Pattern
- Exceeds American National Standard Z358.1 Specifications
- Exceeds European EN 15154-1 & EN 15154-2
- Industry's Only Self-Draining Design - The Aquaduct™
- Separate Supply and Waste Pipes - Meets CEN and Plumbing Requirements
- Ergonomic Hand Activation Eyewash Handle - Easy to Reach from Any Direction
- Fully Assembled and Factory-Tested Eyewash or Eye/Face Wash with Hinged Dust Covers
- Yellow Transparent Plastic and Stainless Steel Bowl Covers Available
- Barrier Free Options Are Available
- Universal Identification Sign and Inspection Tag Included
- Classified by Underwriters Laboratories Inc. to ANSI Z358.1
- Listed by Intertek to EN 15154-1 & EN 15154-2
- SpinTec showerheads are covered by one or more of the following patents: 6113446; 0594,069; D669,555; Reg. Comm. Des. 0001079560-0001. Other patents pending.
- Halo is Covered by One or More of the Following Patents: D662,220; D662,219; D665,903. Other Patents Pending.

#### Specifications

Standard and Barrier-Free Combination Drench Shower/Eyewash or Eye/Face Wash Units save space and fit easily into any work environment. Shower valve operates quickly by a pull rod with a triangular handle. Shower provides a superior washdown with a more even spray pattern. Halo eyewash or eye/face wash, operated by an ergonomic, highly visible push handle, provides effective wash down coverage and spray pattern. Integral strainer reduces debris in the water and also prevents clogging.

This plumbing fixture is not intended to dispense water for human consumption through drinking or for preparation of food or beverages.



**Recommended Option:**  
Navigator S19-2100 EPX25  
Emergency Thermostatic Mixing Valve  
**NAVIGATOR**

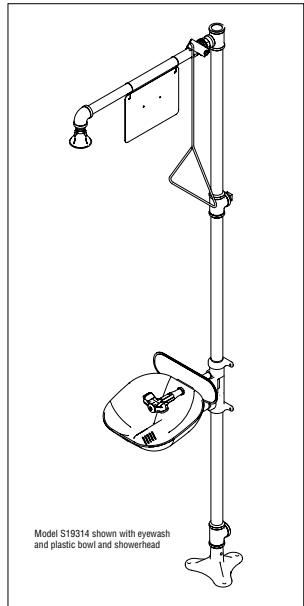


Satisfies ANSI Z358.1  
hot water requirements.

Page 1 of 5  
This information is subject to change without notice.  
Bradley\_SafetyComb\_S19314Series

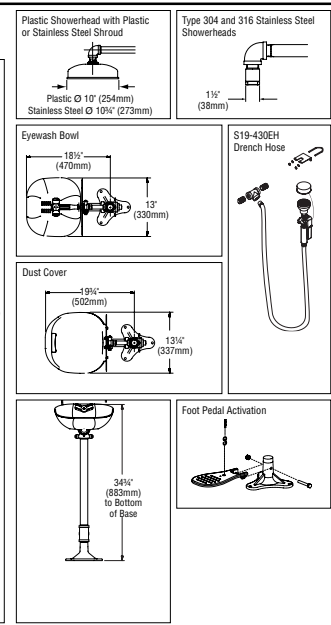
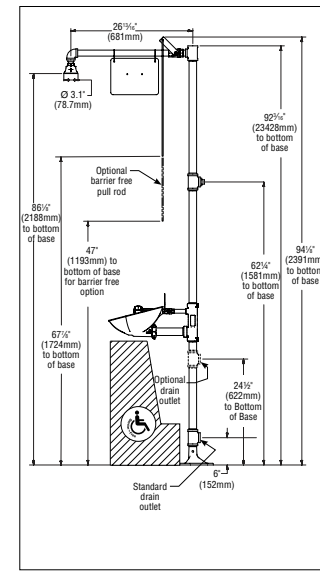
5/19/2014

© 2015 Bradley  
P.O. Box 309, Menomonie Falls, WI 53052-0309  
800 BRADLEY (800 272 3539) +1 262 251 6900  
bradleycorp.com

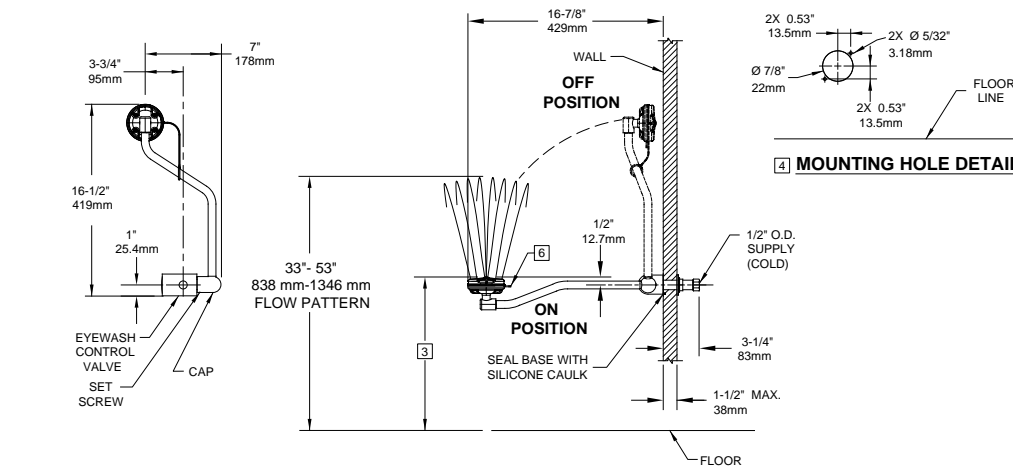


### S19314 Series Combination Drench Shower and Halo™ Eyewash or Eye/Face Wash

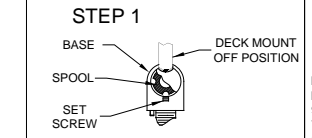
S19314 shower with Plastic Bowl and Showerhead



THIS DOCUMENT IS TRUE AND CORRECT AT TIME OF PUBLICATION. CONTINUED PRODUCT IMPROVEMENTS MAKE SPECIFICATIONS AND MEASUREMENTS SUBJECT TO CHANGE WITHOUT NOTICE.

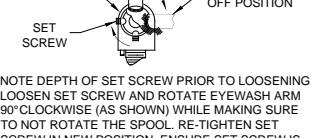


#### CONVERT TO WALL MOUNT CONFIGURATION



UNIT IS SHIPPED IN DECK MOUNT CONFIGURATION. TO CONVERT TO WALL MOUNT CONFIGURATION, POSITION ARM IN 'DECK MOUNT OFF POSITION' AS ABOVE.

#### STEP 2: WALL MOUNT OFF POSITION



NOTE DEPTH OF SET SCREW PRIOR TO LOOSENING. LOOSEN SET SCREW AND ROTATE EYEWASH ARM 90° COUNTERCLOCKWISE (AS SHOWN) WHILE MAKING SURE TO NOT ROTATE THE SPOOL. RE-TIGHTEN SET SCREW IN NEW POSITION. ENSURE SET SCREW IS PROPERLY SEATED IN INDENT. ENSURE SET SCREW IS TIGHT AND AT ITS ORIGINAL DEPTH. ENSURE CORRECT ARM ORIENTATION BEFORE MOUNTING TO WALL. REFERENCE DRAWINGS AT RIGHT.

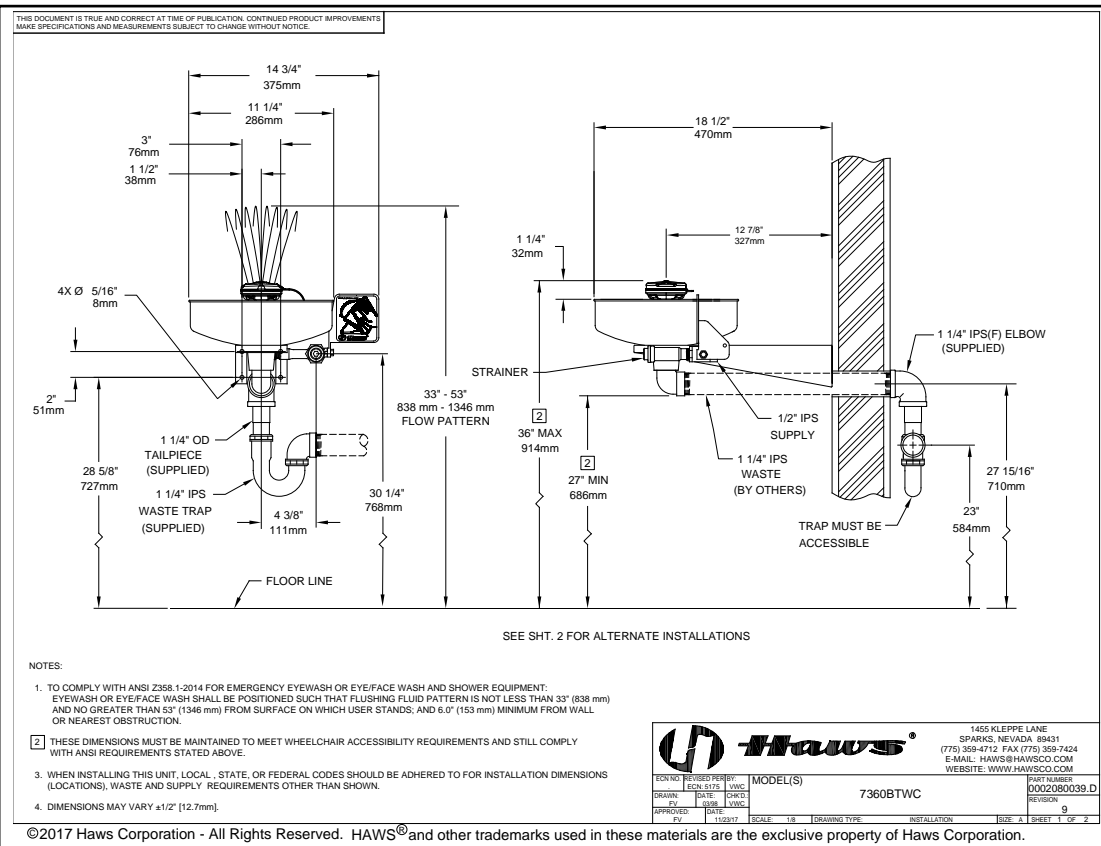
#### 7610 WALL MOUNTED CONFIGURATION (SEE SHEET 1 FOR 7610 DECK MOUNTED CONFIGURATION) (SEE SHEET 2 FOR 7610 DECK MOUNTED DETAIL)

<b>Haws</b>		1455 KLEPPE LANE SPARKS, NEVADA 89431 (775) 359-4712 FAX (775) 359-7424 E-MAIL: HAWS@HAWSCO.COM WEBSITE: WWW.HAWSCO.COM	
DESIGN	DATE	MODEL(S)	7610
APPROVED	SCALE	DESCRIPTION	PULLDOWN EYE/FACE WASH
	1:1	INSTALLATION	18
		REVISION	0002080067.D

©2017 Haws Corporation - All Rights Reserved. HAWS® and other trademarks used in these materials are the exclusive property of Haws Corporation.

## Combination Shower/ Face Wash Unit - Bradley S19314SBFW

## Deck Mount Face Wash Unit - Haws 7610 Pull Down Face Wash



- NOTES:
- TO COMPLY WITH ANSI Z358.1-2014 FOR EMERGENCY EYEWASH OR EYE/FACE WASH AND SHOWER EQUIPMENT: EYEWASH OR EYE/FACE WASH SHALL BE POSITIONED SUCH THAT FLUSHING FLUID PATTERN IS NOT LESS THAN 33" (838 mm) AND NO GREATER THAN 53" (1346 mm) FROM SURFACE ON WHICH USER STANDS; AND 6.0" (153 mm) MINIMUM FROM WALL OR NEAREST OBSTRUCTION.
  - THESE DIMENSIONS MUST BE MAINTAINED TO MEET WHEELCHAIR ACCESSIBILITY REQUIREMENTS AND STILL COMPLY WITH ANSI REQUIREMENTS STATED ABOVE.
  - WHEN INSTALLING THIS UNIT, LOCAL, STATE, OR FEDERAL CODES SHOULD BE ADHERED TO FOR INSTALLATION DIMENSIONS (LOCATIONS), WASTE AND SUPPLY REQUIREMENTS OTHER THAN SHOWN.
  - DIMENSIONS MAY VARY ±1/2" (12.7mm).

<b>Haws</b>		1455 KLEPPE LANE SPARKS, NEVADA 89431 (775) 359-4712 FAX (775) 359-7424 E-MAIL: HAWS@HAWSCO.COM WEBSITE: WWW.HAWSCO.COM	
DESIGN	DATE	MODEL(S)	7360BTWC
APPROVED	SCALE	DESCRIPTION	PULLDOWN EYE/FACE WASH
	1:1	INSTALLATION	9
		REVISION	0002080039.D

©2017 Haws Corporation - All Rights Reserved. HAWS® and other trademarks used in these materials are the exclusive property of Haws Corporation.

## Wall/Corner Mount Face Wash Unit - Haws 7360BTWC

- General Notes:**
- Alternate installations offered by manufacturer. Contractor shall submit installation method to University for approval prior to work.
  - Information for reference only. Contractor to verify product and materials prior to install.
  - All emergency eye wash, face wash and shower units shall be installed to comply with Chapter 11B of the C.B.C. "Barrier Free".**



University of California  
Merced, California

Project Name:

Science and  
Engineering  
Building  
Emergency  
Eyewash  
Correction

Building Number:	0200
08/09/2018	
10/10/2018	REBID
10/17/2018	ADD 1
10/29/2018	ADD 2
Key Plan:	



Drawing Title  
**Product Data**

Drawing Number:  
**007**



Remove existing sink mount eyewash. Cap with non-corrosive grommet cover where replacement sink mount eyewash is not installed.

REMOVE EXISTING SINK MOUNTED EYE WASH

1  
008



Existing Eye Wash Unit



Replacement Unit  
Bradley S39-681

Remove existing eye wash unit. Provide and install new face wash sprayhead unit. In compliance with ANSI standards.

REPLACE EYE WASH WITH FACE WASH

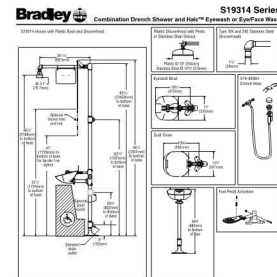
2  
008



REMOVE CLIPS AT EXISTING EYE WASH

3  
008

**⚠**  
Replace or modify clips with code compliant solution. Contractor to provide detail for approval prior to installation.



EMERGENCY SHOWER / FACE WASH UNIT

Provide and install emergency shower / face wash combination unit in compliance with ANSI Standards. No drain installation necessary. Where ceiling is to be removed and replaced: Plumbing/Electrical Contractor shall coordinate with the University and Trade Package 04 for total tiles/grid removed and replaced. Contractor shall notify University if greater than specified in the Scope of Work.

4  
008



Remove existing recessed eye wash unit. Remove and cap emergency shower head close to deck. Remove wall protrusion. Wall to be flush with adjacent wall. Include framing, patching, painting as needed. Wall finish to match existing. Remove and replace strobe for wall adjustment.

REMOVE EXISTING EYE WASH UNIT AND WALL PROTRUSION

5  
008



Provide and install cane rail to limit protrusion into circulation path.

INSTALLATION OF CANE RAIL

6  
008



**⚠**  
Lower existing shower head between 82" and 96" above finish floor per Z358.1.

LOWER EXISTING SHOWER HEAD

7  
008



Relocate electrical outlet and data port outside of the emergency shower discharge area.

RELOCATE ELECTRICAL/DATA

8  
008



Remove abandon electrical outlet and data port. Provide and install cover plate.

REMOVE ELECTRICAL/DATA

9  
008



Provide and install yellow tape on floor delineating shower discharge area.

YELLOW SAFETY TAPE

10  
008



Provide and install emergency signage. Signage shall apply to they type of shower/face wash unit installed. All signage must be submitted for approval prior to installation.

EMERGENCY SIGNAGE

11  
008



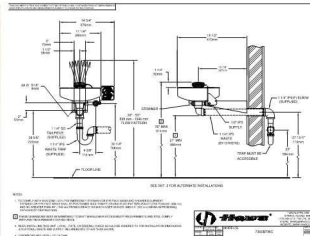
Remove and cap existing shower head above ceiling. Remove associated pull handle from casework.

REMOVE EMERGENCY SHOWER

12  
008



CORNER FACE WASH UNIT



Provide and install corner face wash unit. Exposed pipe acceptable. Installation detail to be submitted for University approval prior to installation. Installation to meet all ADA requirements.

13  
008





Remove power strip and abandon in place. Patch, paint wall as needed to match existing.

REMOVE POWER STRIP

14  
008



Lower existing shower handle to meet ADA compliance.

LOWER SHOWER HANDLE

15  
008



Remove and relocate existing cylinder rack.

RELOCATE CYLINDER RACK

16  
008

**GENERAL NOTES:**

1. Shut down of utilities requires a 14 business day notification.
2. Materials, equipment, etc., not indicated on drawings or specified herein but essential to the successful and efficient completion of the installation shall be furnished and installed by the contractor.

