

**Project Name: UNIVERSITY OF CALIFORNIA, MERCED
HOUSING 4: THE SUMMITS
BID RELEASE 1**

Project No.: 906270

ADDENDUM NO. 2
to the
CONTRACT DOCUMENTS
OCTOBER 13, 2011

- I.** Bidder acknowledges that it is Bidder's responsibility to ascertain whether any Addenda have been issued and if so, to obtain copies of such Addenda as stated in the Advertisement for Bids, page 1. Bidder therefore agrees to be bound by all Addenda that have been issued for this Bid.

This Addendum forms a part of the Contract Documents and modifies the original Bidding Documents (Bid Release 1) and consists of 3 pages (plus attachments). The following changes, additions, or deletions shall be made to the following documents as indicated, and all other conditions shall remain the same.

II. CLARIFICATIONS

A. PRE-BID QUESTIONS – Questions received from bidders and responses are as follows:

1. Q. Sheet T1.01 shows (4) 4" conduits in two locations as being stubbed to within 5' of the new building. Additionally there unlabeled conduits continuing into the building. Is the BR1 contractor responsible for the continuation of the conduits into the build as shown? Is the BR1 contractor responsible for the continuation of the conduits into the build as shown?
 - A. No, the Bid Release 1 contractor is not responsible. These conduits will be continued by the Bid Release 2 Building Electrical Contractor.
- 2a. Q. Sheet T1.01 shows (1) 1 1/4" being stubbed from a relocated Blue Light Phone. Who is responsible for relocating the Blue Light Phone?
 - A. The blue light phone will be relocated by the Bid Release #2 Building Electrical Contractor.
- 2b. Q. Who is responsible for connecting the Blue Light Phone?
 - A. This will be installed and connected by the Bid Release #2 Building Electrical Contractor.

- 2c. Q. Where is the Blue Light Phone being relocated from?
- A. The Contractor for Bid Package 01 12 00 Site Electrical will remove and turn over to the University the existing blue light shown on C-2.1, note #30 and instructed in "Scope of Work " Paragraph 3.25.
3. Q. Please clarify the point of connection location (of existing conduit or power panel MS3W) on CM1.0 (left hand side of the drawing) for the (3) 4" conduit & feeders for the temporary power.
- A. Connect into existing 3 X 5 Handhole (EC2-1) Sta 0+49 shown on attached as-built drawing C4.1-R1 from Phase 3 Housing. Use spare conduits back to MS3W located in the Phase 3 Building against the exterior wall adjacent to Emigrant Pass.
4. Q. Please clarify the days of composite cleanup as there is a conflict between the ProWest Bid Release 1 from today's Job Walk Agenda (Wednesday and Friday) and Section 01 12 00.05 Site Electrical 2.0 .0 Wednesday.
- A. Wednesday only.
5. Q. Please clarify traffic control required and 24 hour fire access lane width required to be maintained while excavating in existing streets example sheet T1.01 left side (4) 4" conduits and manhole) located in Emigrant pass.
- A. Proper Traffic control while working in the streets and fire lanes. Prepare a plan to be approved by the University based on the contractor's means and methods. Stipulate in your plan the maximum amount of width that can be open at all time for approval.
6. Q Clarify discrepancy between T1.01 Telecom and C4.0 indicated telecom near emigrant pass (point of connection and lateral feed to existing).
- A. The arched conduit shown on C-4.0 going to the Phase 3 building exists. **Do not include** that in your bid.
7. Q. Please identify the fire alarm system vendor (for proper coordination of PIV) relocation E1.01.
- A. The Fire Alarm vendor is Notifier.

III. BIDDING/CONTRACT DOCUMENTS AND DIVISION 1 SPECIFICATIONS - VOLUME 1 OF 2

No modifications made.

IV. DIVISIONS 2 – 17 SPECIFICATIONS – VOLUME 2 OF 2


No modifications made.

V. **DRAWINGS**

- A. **ADD** Drawing C4.1 – R1 Marked Addendum #2. This is a marked up as-built drawing from Phase 3 Housing.

UNIVERSITY OF CALIFORNIA, MERCED

**By: ProWest Constructors
Construction Manager / University's Representative's Consultant**


Earl Rush
Vice President Preconstruction

Enclosures:

Drawing C4.1 – R1 (*full size*)

END OF ADDENDUM NO. 2 - BID RELEASE 1

Consultants:

Kennedy/Jenks Consultants
1000 Broadway, Suite 415
Oakland, CA 94607
(510) 663-3960

PGA Design
444 17th Street
Oakland, CA 94612
(510) 465-1256

Peoples Associates
1996 Tarob Court
Milpitas, CA 95035
(408) 957-9220

Belden Consulting Engineers
6670 Amador Plaza Road, Suite 200
Dublin, CA 94568
(925) 829-0772

Bhatia Associates
120 Montgomery Street, Suite
1280 San Francisco, CA 94104
(415) 648-0050

TecCom Design Group
1333 Broadway, Suite 601
Oakland, CA 94612
(510) 337-2800

Student Housing Phase 3

Merced, CA
UCM Project Number 906262

Client:

UNIVERSITY OF CALIFORNIA
UCMERCED

Revision Schedule		
Rev. No.	Issue	Date
	BID RELEASE 1	9/17/08
Δ	BR1 ASI NO. 2	12/9/08
Δ	BR1 ASI NO. 5	3/5/09
Δ	BR1 ASI NO. 6	3/12/09

FULL SHEET REVISION
BR1 ASI NO. 006

12/MAR/09

Stamp:

Job Number: 0813

Drawn by: IR

Checked by: DRT

Date: 03/05/09

Scale: 1" = 20'

Title
SITE UTILITY PLAN

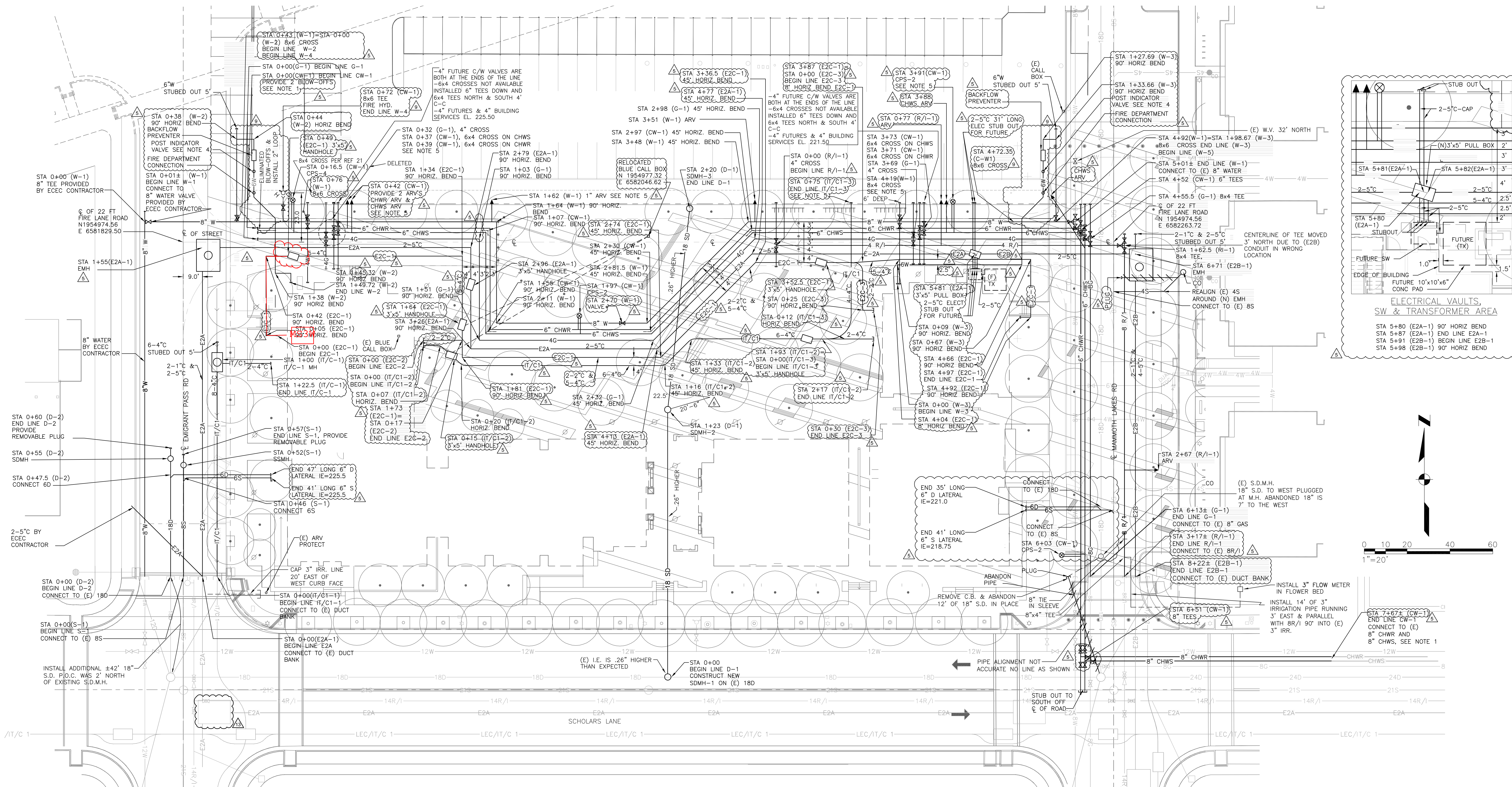
Addendum #2

Sheet

C4.1-R1

FULL SHEET REVISION
BR1 ASI NO. 006

12/MAR/09
BID RELEASE 1



SITE UTILITY PLAN

- NOTES:
1. STATIONING FOR CHILLED WATER SYSTEM IS ALONG A CENTERLINE BETWEEN THE CHWS AND CHWR LINES. THE CHWS AND CHWR LINES ARE OFFSET 1 FOOT ON EACH SIDE OF THE CENTERLINE.
 2. ELECTRIC DUCTS HAVE 4" MIN RADIUS
 3. COMMUNICATION DUCTS HAVE 12" MIN RADIUS
 4. A FUTURE SIDEWALK WILL GO BETWEEN THE POST INDICATOR VALVES AND THE BACKFLOW PREVENTERS. COORDINATE LOCATION WITH BID RELEASE 2 & 5 DRAWINGS.
 5. ALL UTILITY STUB-OUTS, ARV'S & CPS'S, SHALL EXTEND TO TWO FEET BEYOND THE BACK SIDE OF THE FIRE LANE CURB UNLESS SHOWN OTHERWISE