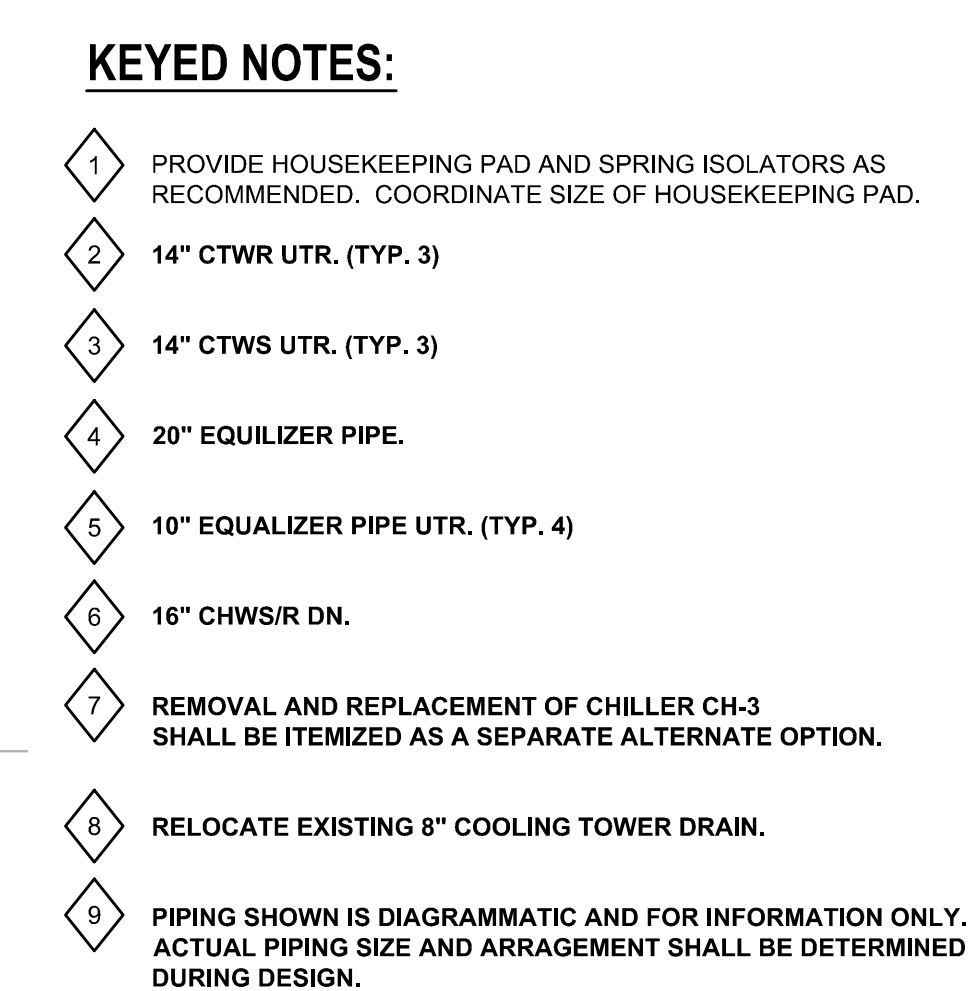


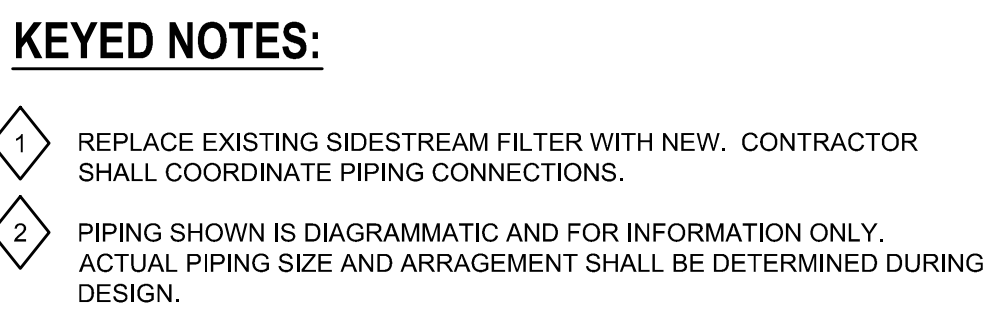
3 CHILLER CONDENSER CONNECTION (TYP) SCALE: NONE

[illegible]



REFERENCE DRAWING

THIS DRAWING IS PROVIDED FOR REFERENCE ONLY. IT WAS PREPARED BY AECOM AS PART OF THE UC MERCED CENTRAL PLANT/EL COMMUNICATIONS RELIABILITY UPGRADE REPORT DATED NOVEMBER 26, 2013 AND DEMONSTRATES THE GENERAL NATURE OF WORK ANTICIPATED FOR THE CPTU PROJECT AT THAT TIME. THE DRAWING DOES NOT SHOW, HOWEVER, THE EXACT OR THE COMPLETE SCOPE OF WORK.



5200 NORTH LAKE ROAD
MERCED, CALIFORNIA 95343

Affiliated Engineers W, Inc.
123 Mission Street, 7th Floor
San Francisco, California 94105
415.764.3700

SEALS

CONSULTANTS

- ◆ **ARCHITECT:**
SIEGFRIED
3244 BROOKSIDE RD, SUITE 100
STOCKTON, CA 94104
(209) 943-2021
- ◆ **CIVIL ENGINEER:**
SIEGFRIED
3244 BROOKSIDE RD, SUITE 100
STOCKTON, CA 94104
(209) 943-2021
- ◆ **STRUCTURAL ENGINEER:**
FORELL / ELSESSER ENGINEERS
160 PINE ST
SAN FRANCISCO, CA 94111
(415) 837-0700
- ◆ **MECHANICAL COST ESTIMATING**
AECOM
300 CALIFORNIA ST, SUITE 400
SAN FRANCISCO, CA 94104
(415) 981-1419

AGENCY APPROVAL

KEYPLAN

[illegible]

SHEET TITLE

**CENTRAL PLAN
COMPLETION**

PROJECT NO. 13914-00	SHEET NO. 3
DRAWN BY:	
CHECKED:	
SCALE: AS NOTED	
DATE: 03.13.2014	FILE:

REFERENCE DRAWING

THIS DRAWING IS PROVIDED FOR REFERENCE ONLY. IT WAS PREPARED BY AECOM AS PART OF THE UC MERCED CENTRAL PLAN/TELECOMMUNICATIONS RELIABILITY UPGRADE REPORT DATED NOVEMBER 26, 2013 AND DEMONSTRATES THE GENERAL NATURE OF WORK ANTICIPATED FOR THE CPTU PROJECT AT THAT TIME. THE DRAWING DOES NOT SHOW, HOWEVER, THE EXACT OR THE COMPLETE SCOPE OF WORK.



**Affiliated
Engineers®**

SEALS

CONSULTANTS

- AGENCY APPROVAL

KEYPLAN

[illegible]

SHEET TITLE

CENTRAL PLANT COMPLETION

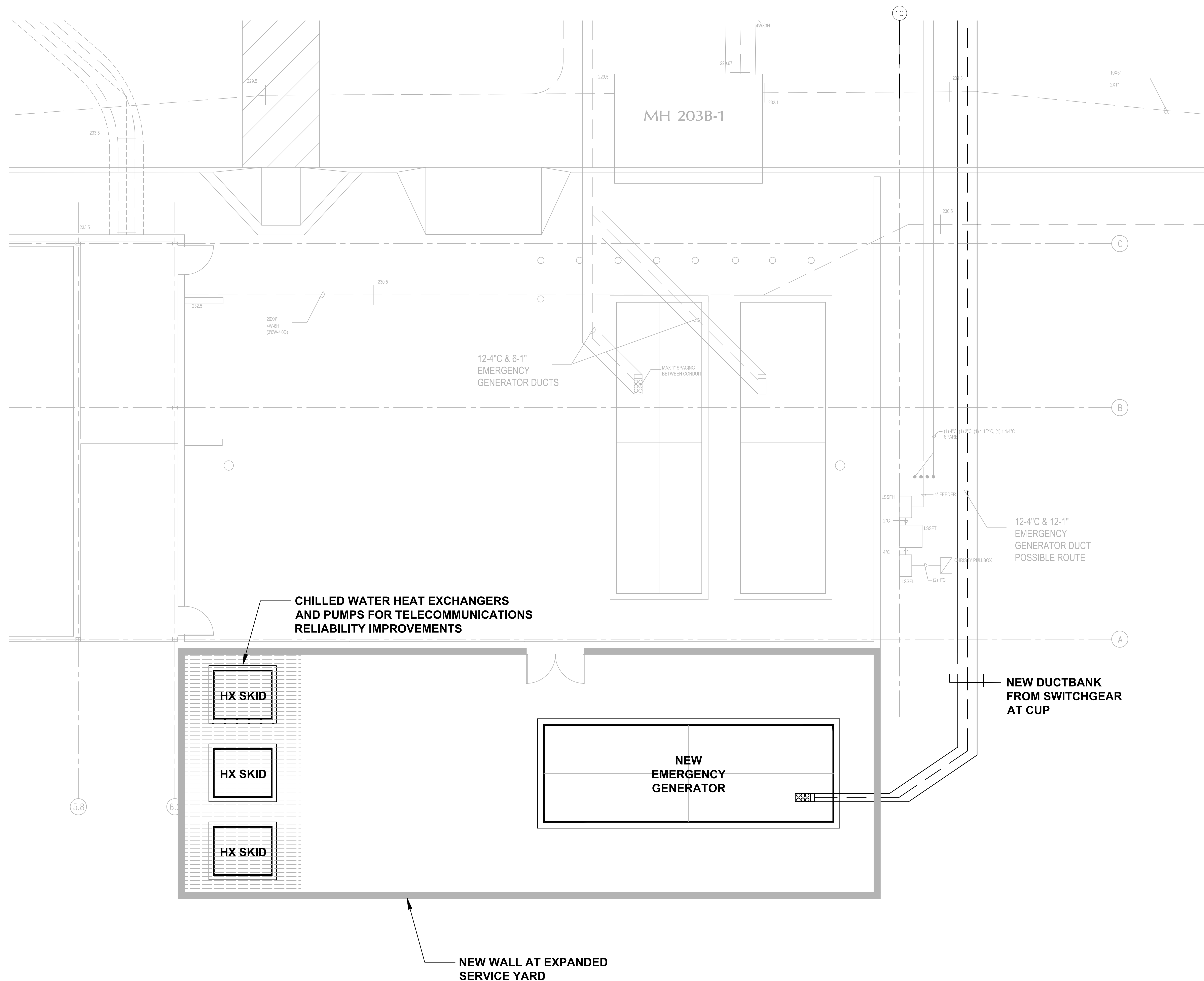
PROJECT NO. 13914-00	SHEET NO. 4
DRAWN BY:	
CHECKED:	
SCALE: AS NOTED	
DATE: 03.13.2014	FILE:

REFERENCE DRAWING

THIS DRAWING IS PROVIDED FOR REFERENCE ONLY. IT WAS PREPARED BY AECOM AS PART OF THE UC MERCED CENTRAL PLAN/TELECOMMUNICATIONS RELIABILITY UPGRADE REPORT DATED NOVEMBER 26, 2013 AND DEMONSTRATES THE GENERAL NATURE OF WORK ANTICIPATED FOR THE CPTU PROJECT AT THAT TIME. THE DRAWING DOES NOT SHOW, HOWEVER, THE EXACT OR THE COMPLETE SCOPE OF WORK.

[illegible]

PROJECT NO. 13914-00	SHEET NO. 5
DRAWN BY:	
CHECKED:	
SCALE: AS NOTED	
DATE: 03.13.2014	FILE:



1 EXPANDED SERVICE YARD
SCALE: 1/4" = 1'-0"

REFERENCE DRAWING

THIS DRAWING IS PROVIDED FOR REFERENCE ONLY. IT WAS PREPARED BY AECOM AS PART OF THE UC MERCED CENTRAL PLANT/TELECOMMUNICATIONS RELIABILITY UPGRADE PROJECT DATED NOVEMBER 26, 2013 AND DEMONSTRATES THE GENERAL NATURE OF WORK ANTICIPATED FOR THE CPTU PROJECT AT THAT TIME. THE DRAWING DOES NOT SHOW, HOWEVER, THE EXACT OR THE COMPLETE SCOPE OF WORK.

SEALS

CONSULTANTS

- ARCHITECT:
SIEGFRIED
3244 BROOKSIDE RD, SUITE 100
STOCKTON, CA 94104
(209) 943-2021
- CIVIL ENGINEER:
SIEGFRIED
3244 BROOKSIDE RD, SUITE 100
STOCKTON, CA 94104
(209) 943-2021
- STRUCTURAL ENGINEER:
FORELL / ELSESSER ENGINEERS
160 PINE ST
SAN FRANCISCO, CA 94111
(415) 637-0700
- MECHANICAL COST ESTIMATING:
AECOM
300 CALIFORNIA ST, SUITE 400
SAN FRANCISCO, CA 94104
(415) 981-1419

AGENCY APPROVAL

KEYPLAN

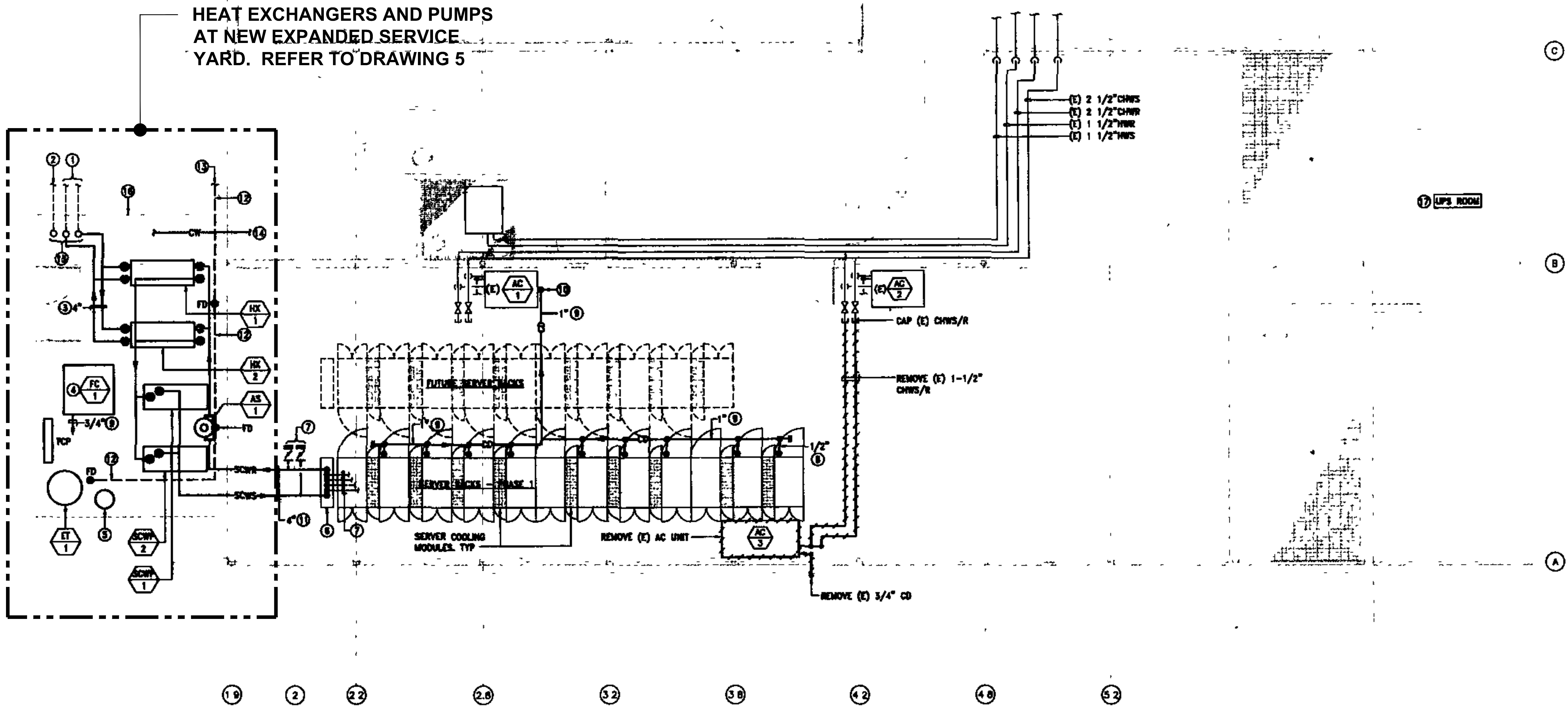
NO.	DESCRIPTION	DATE
1		
2		
3		
4		
5		
6		
7		
8		
9		
10		
11		
12		
13		
14		
15		
16		
17		
18		
19		
20		
21		
22		
23		
24		
25		
26		
27		
28		
29		
30		
31		
32		
33		
34		
35		
36		
37		
38		
39		
40		
41		
42		
43		
44		
45		
46		
47		
48		
49		
50		
51		
52		
53		
54		
55		
56		
57		
58		
59		
60		
61		
62		
63		
64		
65		
66		
67		
68		
69		
70		
71		
72		
73		
74		
75		
76		
77		
78		
79		
80		
81		
82		
83		
84		
85		
86		
87		
88		
89		
90		
91		
92		
93		
94		
95		
96		
97		
98		
99		
100		

SHEET TITLE
**TELECOMMUNICATIONS
RELIABILITY UPGRADE**

PROJECT NO. 13914-00	SHEET NO.
DRAWN BY:	6
CHECKED:	
SCALE: AS NOTED	
DATE: 03.13.2014	
FILE:	

REFERENCE DRAWING

THIS DRAWING IS PROVIDED FOR REFERENCE ONLY. IT WAS
PREPARED BY AECOM AS PART OF THE UC MERCED CENTRAL
PLANT/TELECOMMUNICATIONS RELIABILITY UPGRADE REPORT
DATED NOVEMBER 26, 2013 AND DEMONSTRATES THE GENERAL
NATURE OF WORK ANTICIPATED FOR THE GPTU PROJECT AT
THAT TIME. THE DRAWING DOES NOT SHOW, HOWEVER, THE
EXACT OR THE COMPLETE SCOPE OF WORK.



[illegible]

TELECOMMUNICATIONS RELIABILITY UPGRADE

PROJECT NO. 13914-00	SHEET NO. 7
DRAWN BY:	
CHECKED:	
SCALE: AS NOTED	
DATE: 03.13.2014	FILE:



SEQUENCE OF OPERATION

LEAD PUMP TO OPERATE CONTINUOUSLY.

MODULATE SCW PUMP SPEED TO MAINTAIN DESIRED SYSTEM DIFFERENTIAL PRESSURE AS DETERMINED BY THE BALANCER.

MODULATE OPERATING CUP CHW PUMP TO MAINTAIN SCWS AT NO LESS THAN 50°F.

UPON PUMP FAILURE, ALARM, SHUTDOWN AFFECTED PUMP AND AUTOMATICALLY START THE STAND BY PUMP TO TAKE ITS PLACE.

MONITOR BTU METER.

MONITOR FLOW METER

MODULATE FC-1 CONTROL VALVE TO MAINTAIN MECHANICAL ROOM TEMPERATURE.

MONITOR SERVER COOLING MODULE DATA.

POTENTIAL OVERFLOW AND/OR LEAK DETECTION MONITORING.

ALTERNATE LEAD/LAG PUMPS MONTHLY AND HEAT EXCHANGERS. ODD TAG/ODD MONTH. EVEN TAG/EVEN MONTH.

REFERENCE DRAWING

THIS DRAWING IS PROVIDED FOR REFERENCE ONLY. IT WAS PREPARED BY AECOM AS PART OF THE UC MERCED CENTRAL PLAN/TELECOMMUNICATIONS RELIABILITY UPGRADE REPORT DATED NOVEMBER 26, 2013 AND DEMONSTRATES THE GENERAL NATURE OF WORK ANTICIPATED FOR THE CPTU PROJECT AT THAT TIME. THE DRAWING DOES NOT SHOW, HOWEVER, THE EXACT OR THE COMPLETE SCOPE OF WORK.