



ATTACHMENT 5

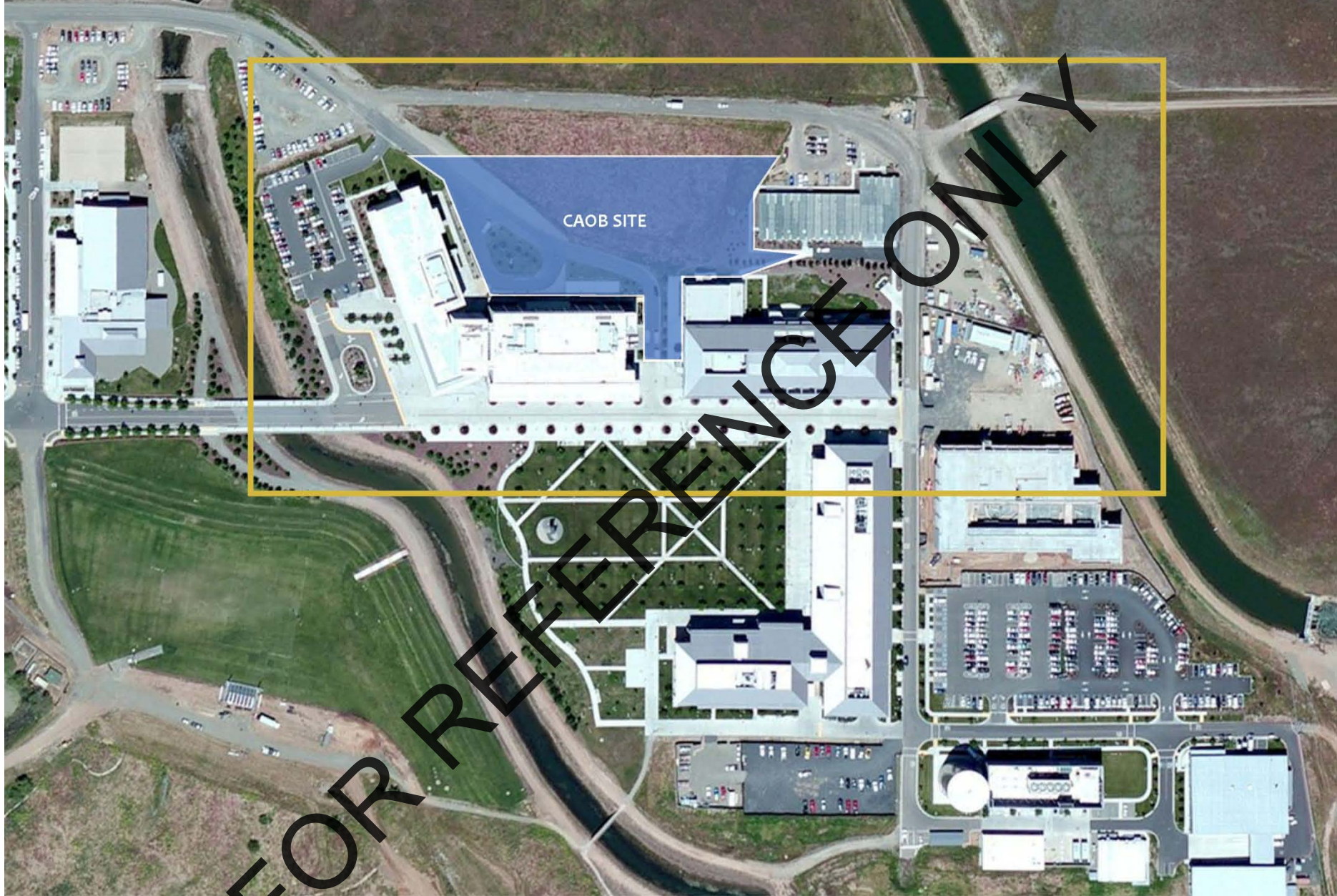
**UCMERCED**  
CLASSROOM AND ACADEMIC OFFICE BUILDING



SOLOMON **CORDWELL** BUENZ

Project No. 900120  
28 JANUARY 2013





CLASSROOM AND ACADEMIC OFFICE BUILDING

**AERIAL SITE PLAN**

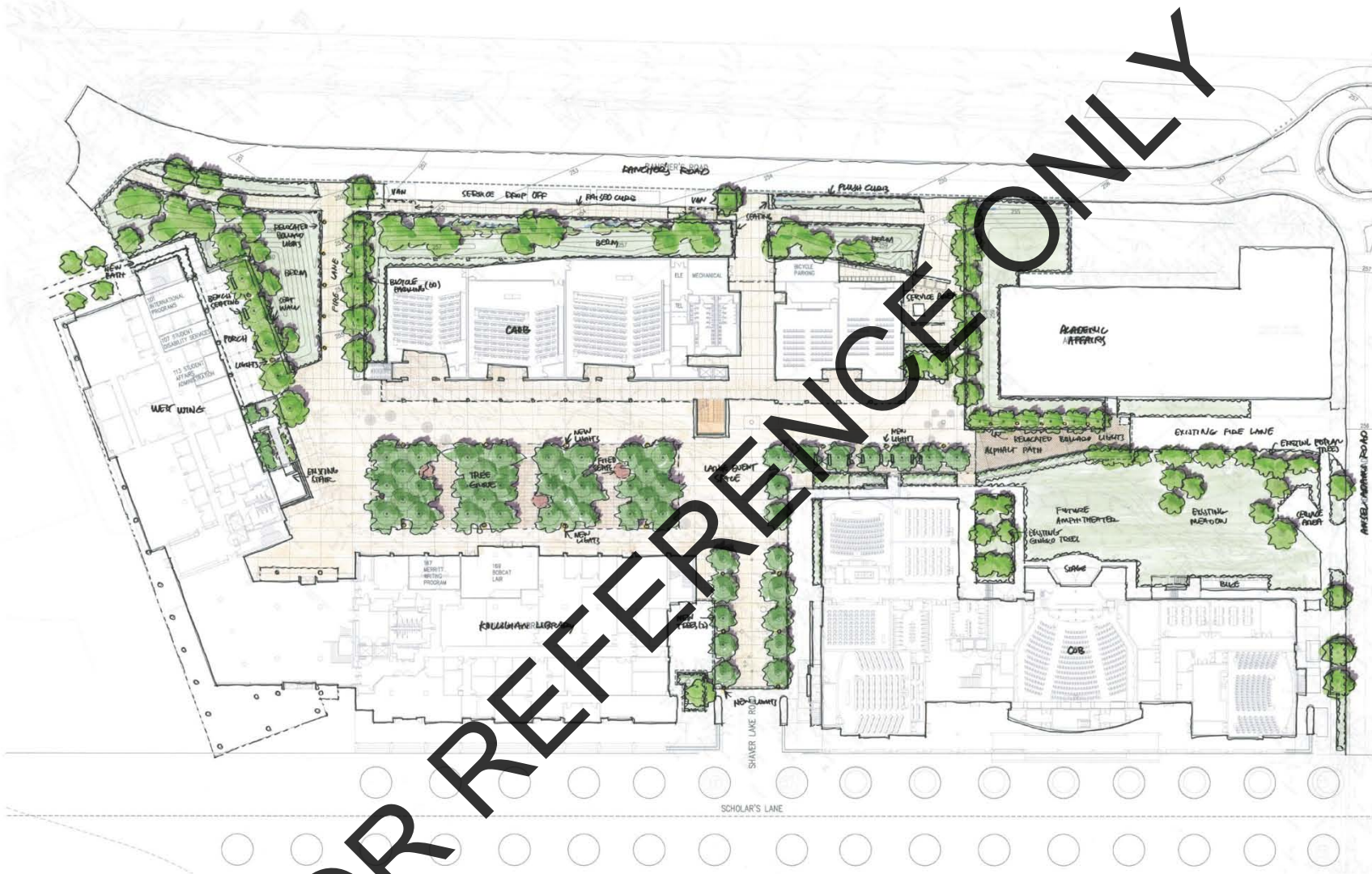
Project No. 900120  
2013 JANUARY 28



© Solomon Cordwell Buenz 2013

UCMERCED





FOR REFERENCE ONLY

CLASSROOM AND ACADEMIC OFFICE BUILDING

**PRECINCT PLAN**

Project No. 900120  
2013 JANUARY 28



© Solomon Cordwell Buenz 2013

UCMERCED

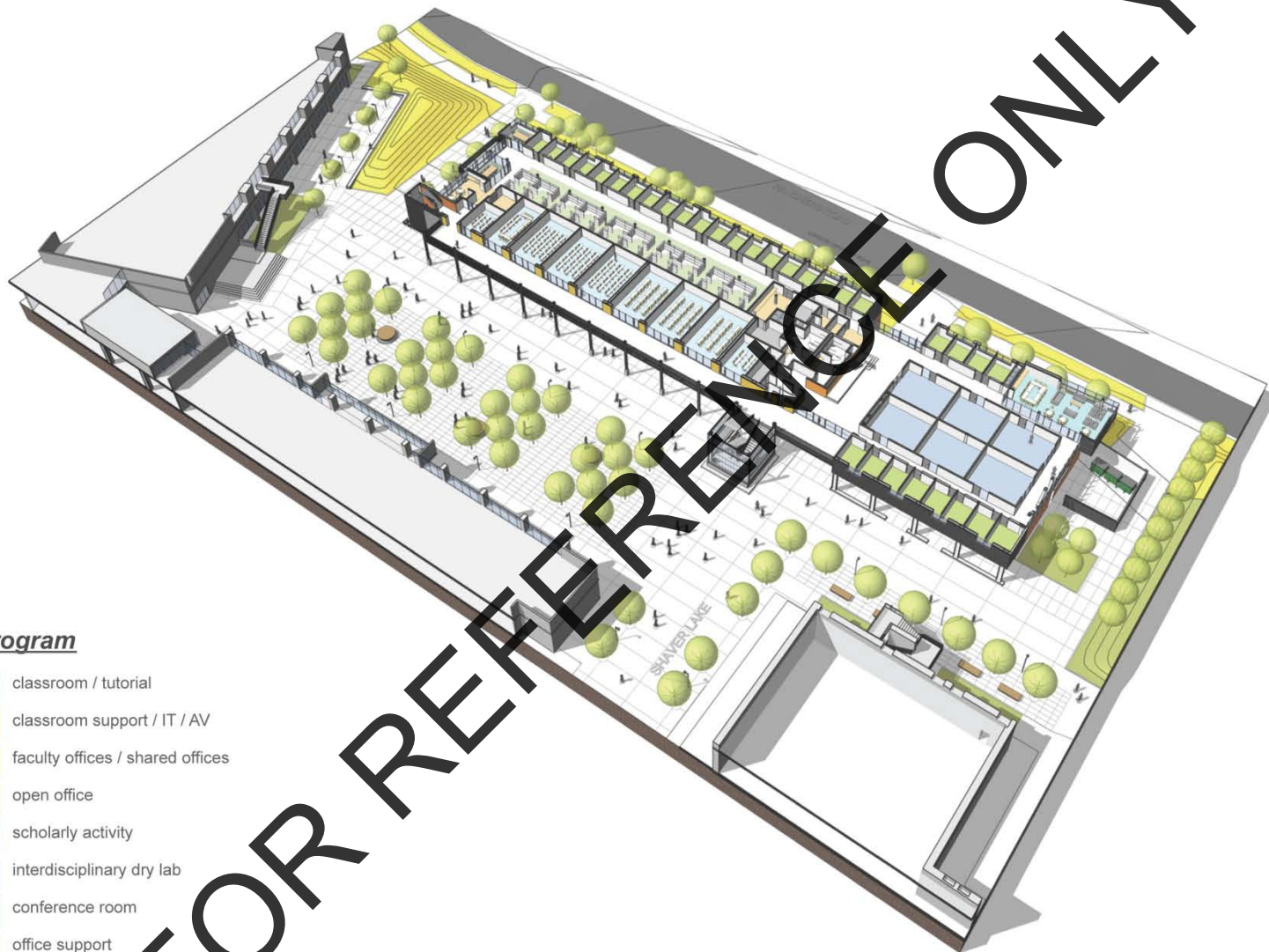


**Program**

- classroom / tutorial
- classroom support / IT / AV
- faculty offices / shared offices
- open office
- scholarly activity
- interdisciplinary dry lab
- conference room
- office support
- back of house

**GROUND LEVEL**





**Program**

- classroom / tutorial
- classroom support / IT / AV
- faculty offices / shared offices
- open office
- scholarly activity
- interdisciplinary dry lab
- conference room
- office support
- back of house

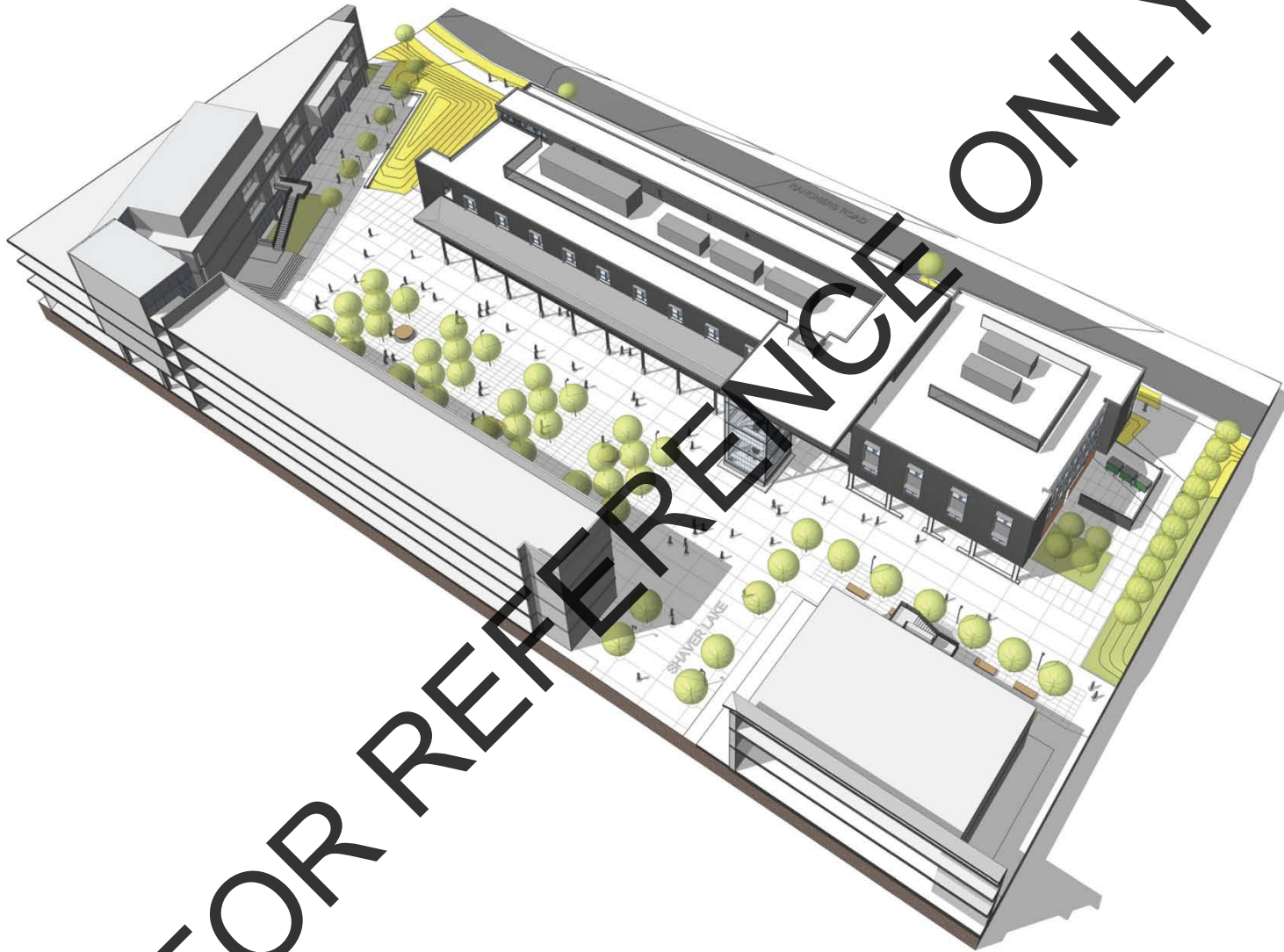
**SECOND LEVEL**

**Program**

- classroom / tutorial
- classroom support / IT / AV
- faculty offices / shared offices
- open office
- scholarly activity
- interdisciplinary dry lab
- conference room
- office support
- back of house

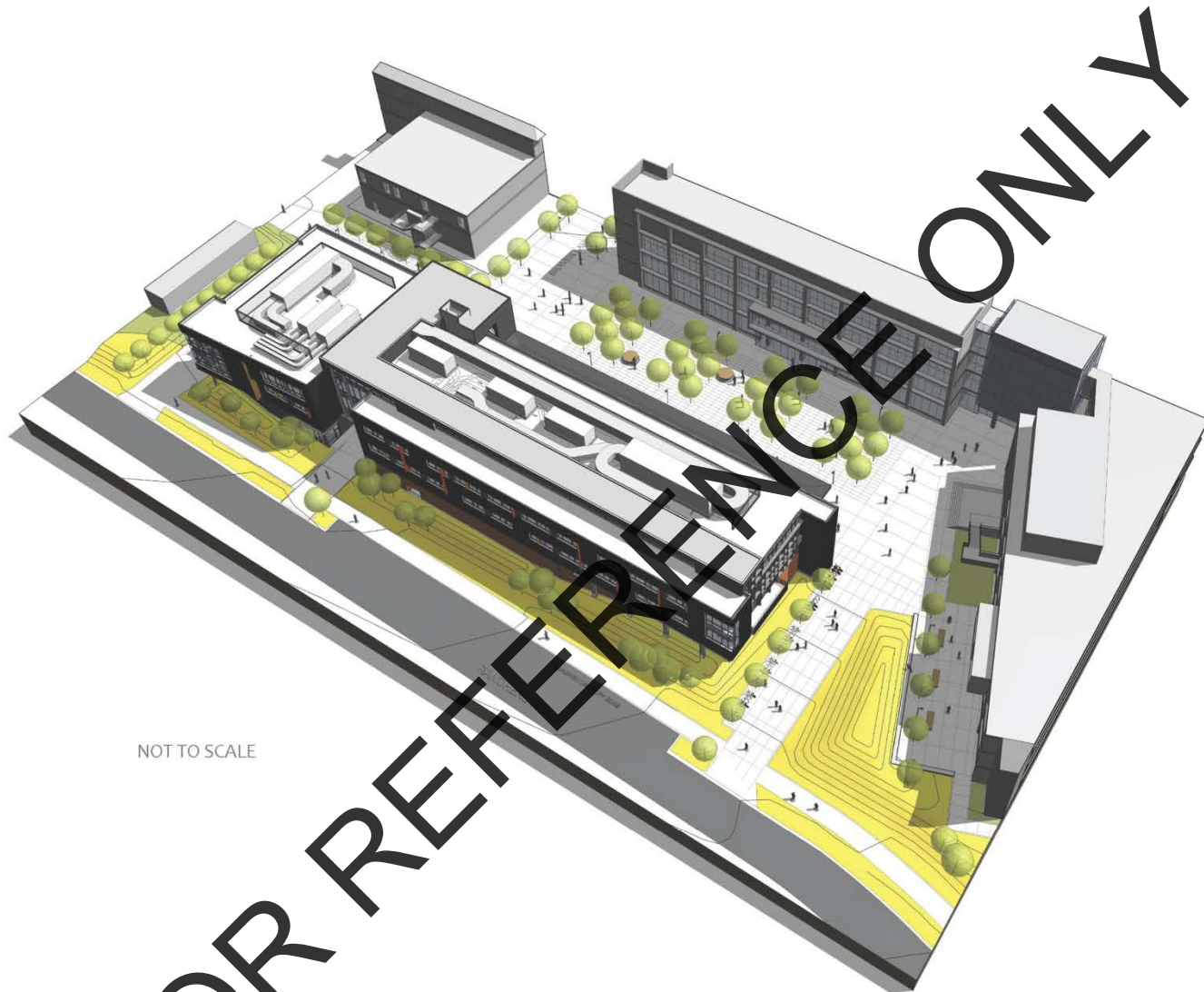
**THIRD LEVEL**

FOR REFERENCE ONLY



ROOF LEVEL





NOT TO SCALE

CLASSROOM AND ACADEMIC OFFICE BUILDING  
**AERIAL VIEW LOOKING EAST - ROOF LEVEL**



© Solomon Cordwell Buenz 2013

UCMERCED

Project No. 900120  
2013 JANUARY 28





CLASSROOM AND ACADEMIC OFFICE BUILDING

## FIRST FLOOR PLAN

Project No. 900120  
2013 JANUARY 28



© Solomon Cordwell Buenz 2013

UCMERCED



CLASSROOM AND ACADEMIC OFFICE BUILDING

## SECOND FLOOR PLAN

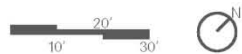
Project No. 900120  
2013 JANUARY 28



© Solomon Cortwell Buehler 2013

UCMERCED





CLASSROOM AND ACADEMIC OFFICE BUILDING

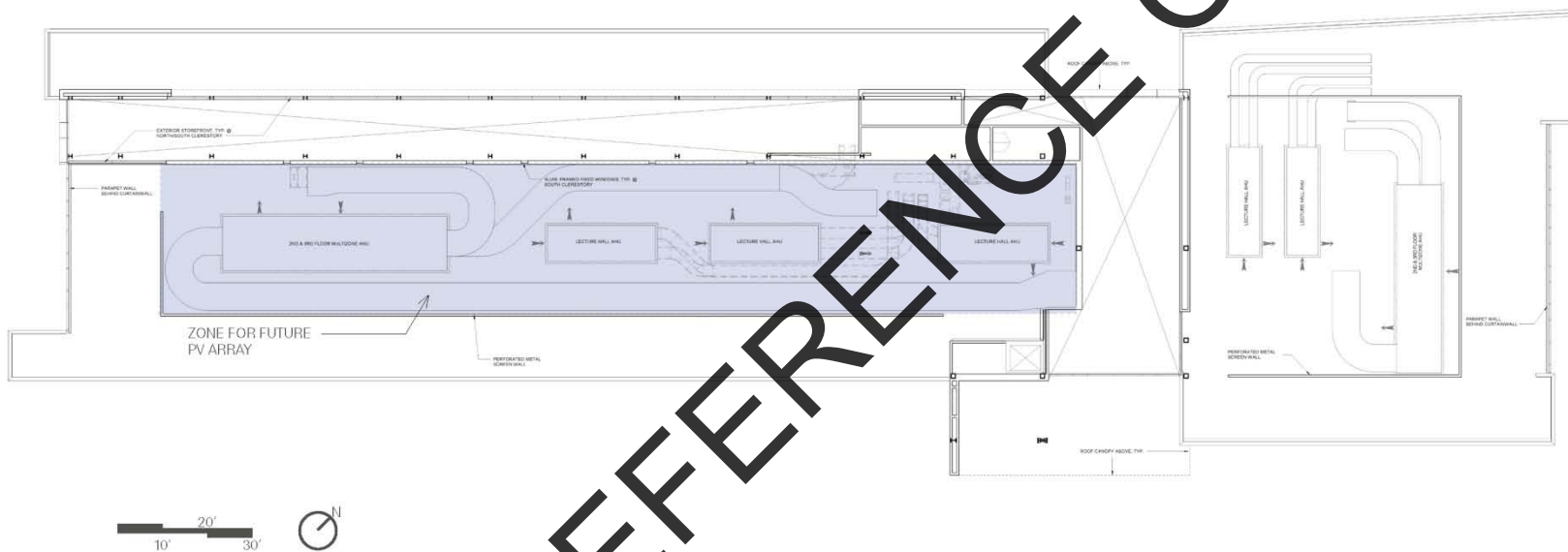
**THIRD FLOOR PLAN**

Project No. 900120  
2013 JANUARY 28



© Solomon Cordwell Buenz 2013

UCMERCED



CLASSROOM AND ACADEMIC OFFICE BUILDING

## ROOF PLAN

Project No. 900120  
2013 JANUARY 28

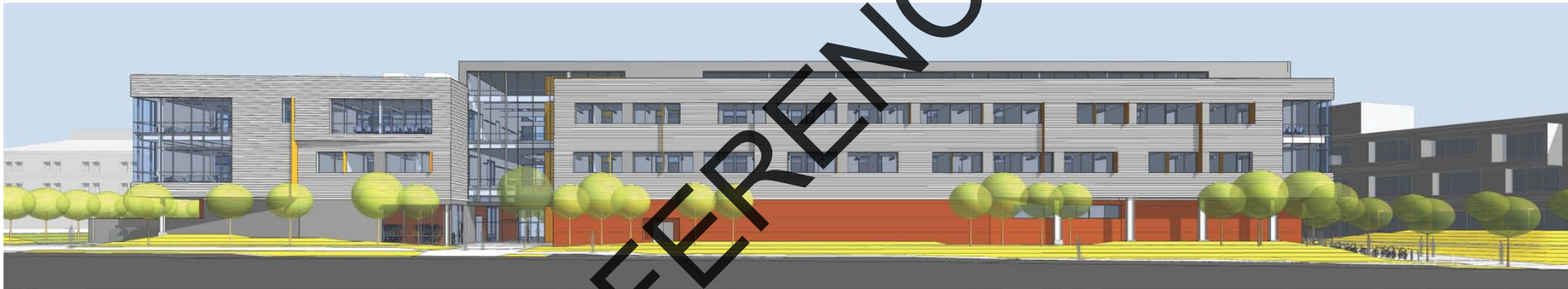


© Solomon Cordwell Buenz 2013

UCMERCED



FOR REFERENCE ONLY



NOT TO SCALE

CLASSROOM AND ACADEMIC OFFICE BUILDING  
**NORTH ELEVATION PERSPECTIVE**

Project No. 900120  
2013 JANUARY 28



© Solomon Cortwell Buenz 2013

UCMERCED

FOR REFERENCE ONLY



NOT TO SCALE



© Solomon Cordwell Buenz 2013

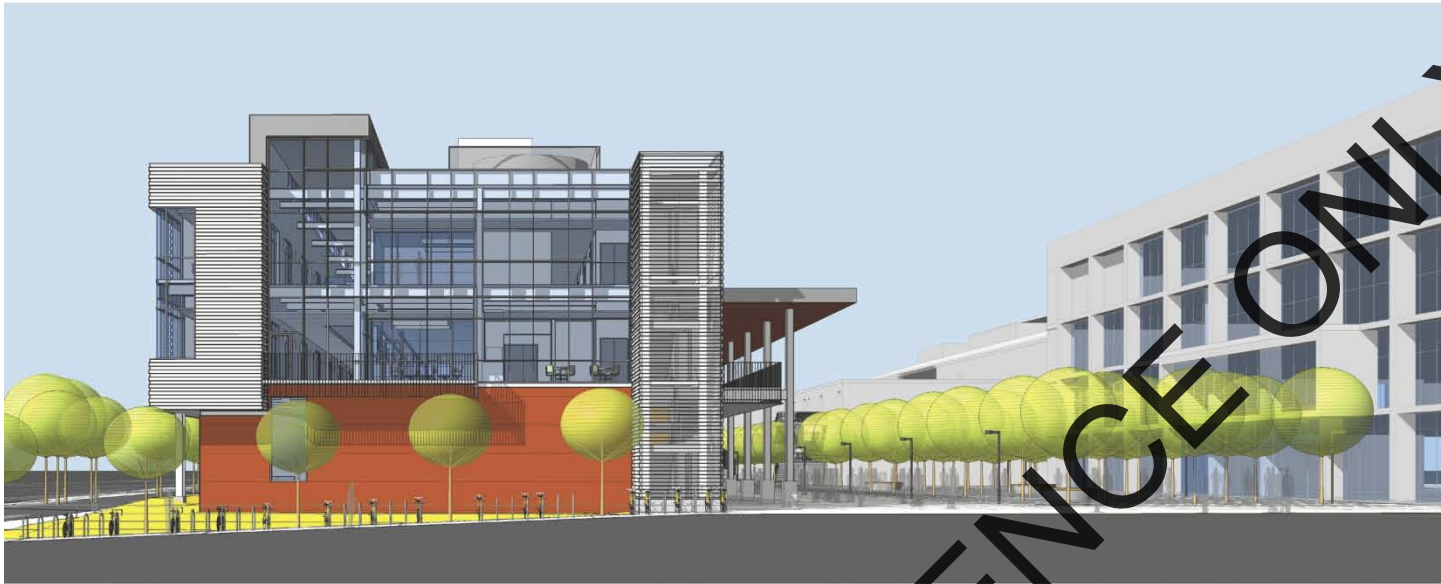
UCMERCED

CLASSROOM AND ACADEMIC OFFICE BUILDING  
**SOUTH ELEVATION PERSPECTIVES**

Project No. 900120  
2013 JANUARY 28



FOR REFERENCE ONLY



NOT TO SCALE



NOT TO SCALE

CLASSROOM AND ACADEMIC OFFICE BUILDING  
**WEST AND EAST ELEVATION PERSPECTIVES**



© Solomon Cordwell Buenz 2013

UCMERCED

Project No. 900120  
2013 JANUARY 28

FOR REFERENCE ONLY



NOT TO SCALE

CLASSROOM AND ACADEMIC OFFICE BUILDING

**SECTIONAL PERSPECTIVE**

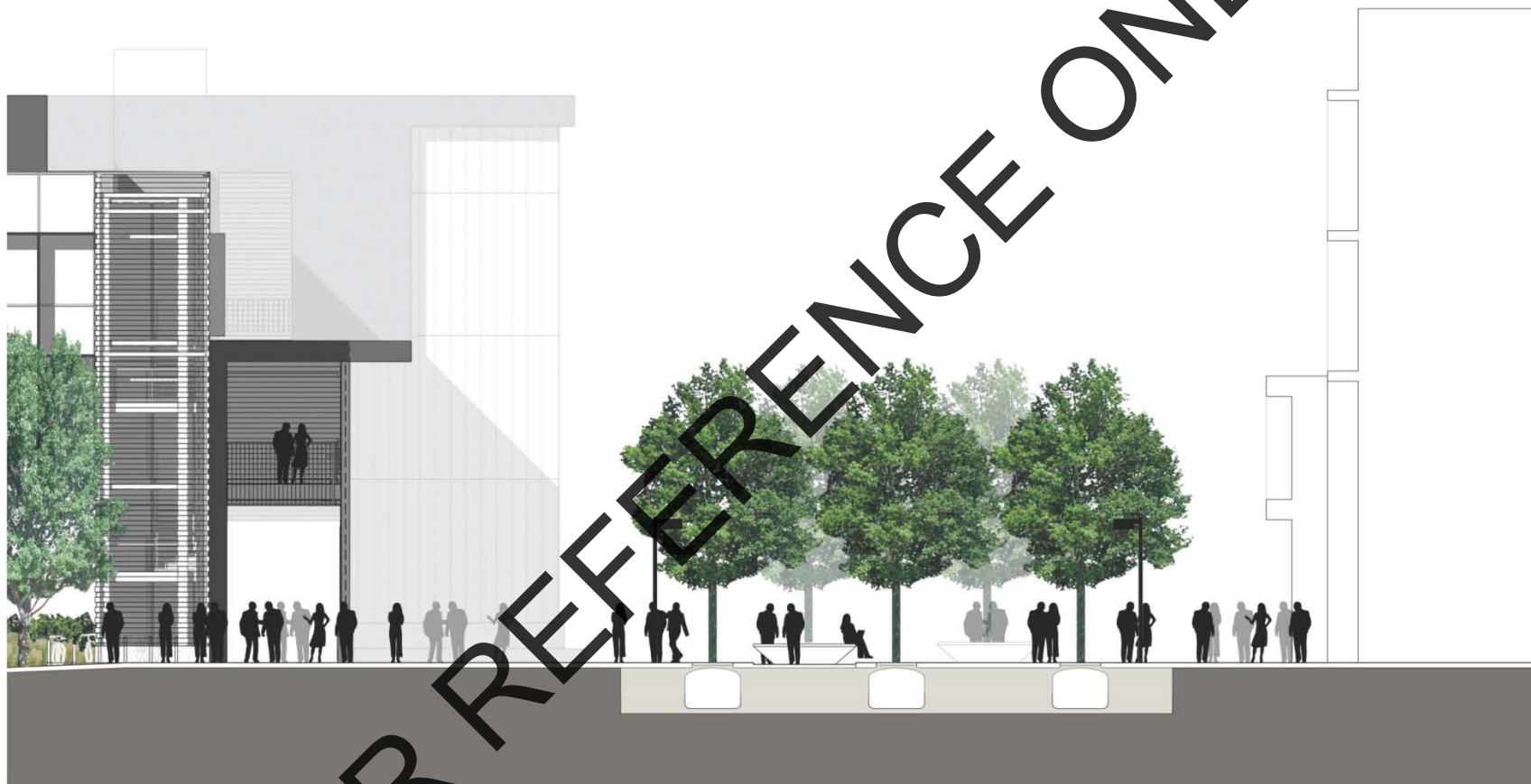
Project No. 900120  
2013 JANUARY 28



© Solomon Cordwell Buenz 2013

UCMERCED





**SECTION : The COURTYARD**

FOR REFERENCE ONLY

SHAVER LAKE APPROACH (ALT)

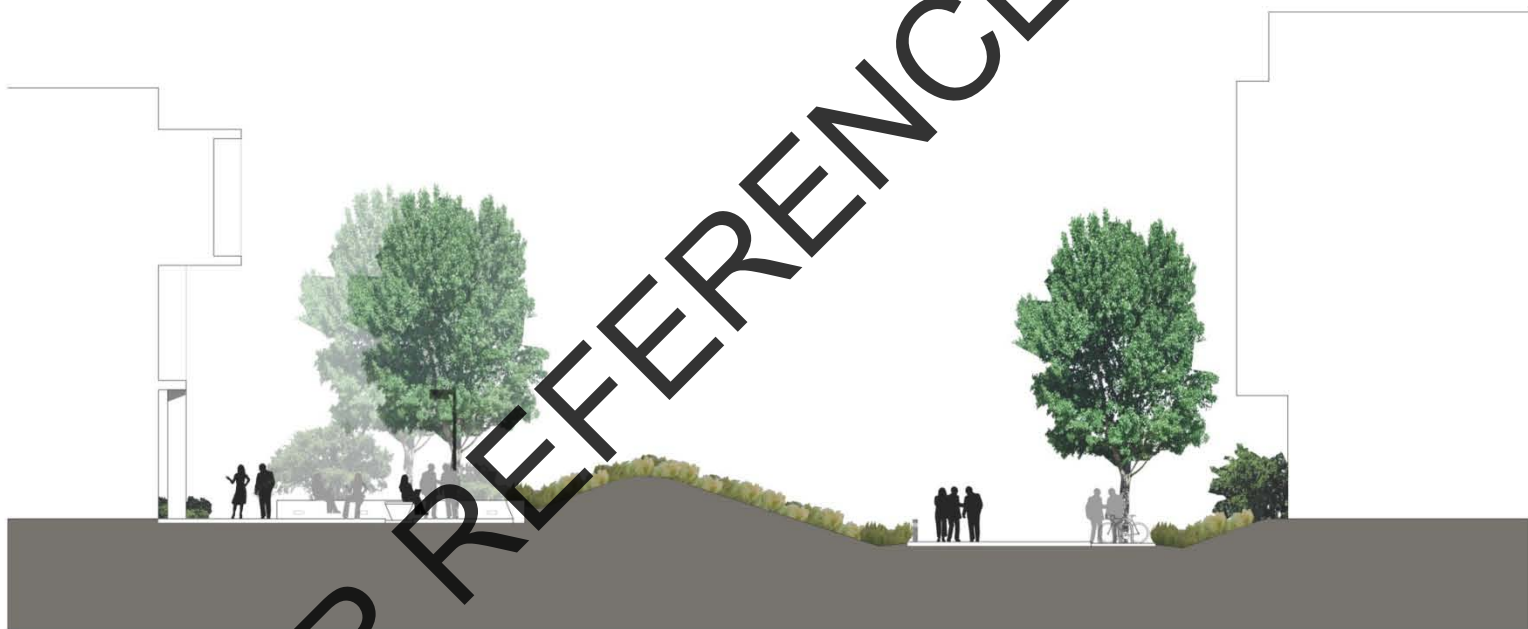
FOR REFERENCE ONLY

APPROACH FROM ANNEX (ALT)



FOR REFERENCE ONLY

LANTERN APPROACH



**SECTION : *The PORCH***

FOR REFERENCE ONLY



CLASSROOM AND ACADEMIC OFFICE BUILDING  
**RENDERING - VIEW FROM KOLLIGIAN LIBRARY BRIDGE**



© Solomon Cordwell Buenz 2013

UCMERCED

Project No. 900120  
2013 JANUARY 28