

**Project Name: UNIVERSITY OF CALIFORNIA, MERCED
COB ROOMS 110 & 114 RENOVATIONS**
Project No.: 907015

ADDENDUM NO. 3
to the
CONTRACT DOCUMENTS
August 22, 2012

- I. Bidder acknowledges that it is the Bidder's responsibility to ascertain whether any Addenda have been issued and if so, to obtain copies of such Addenda. Bidder therefore agrees to be bound by all Addenda that have been issued for this bid.

This Addendum forms a part of the Contract Documents and modifies the original Bidding Documents. The following changes, additions, or deletions shall be made to the following documents as indicated and all other Contract Documents shall remain the same.

- II. BIDDING/CONTRACT DOCUMENTS AND DIVISION 1 SPECIFICATIONS – VOLUME 1
NONE
- III. CLARIFICATIONS
NONE
- IV. SPECIFICATIONS
NONE
- V. DRAWING SHEETS - Replace the following sheets with the drawings attached to this Addenda.

A. RE-ISSUE THE FOLLOWING DRAWING SHEETS

See drawings for clouded and called out Addendum #3 changes.

1. A-071, COVER SHEET SYMBOLS NOTES AND SCHEDULE
2. A-271, NEW FLOOR PLANS & REFLECTED CEILING PLANS
3. A-272, NEW INTERIOR ELEVATIONS
4. A-272(a), NEW INTERIOR ELEVATIONS (BID ALTERNATE)
5. A-571, CLASSROOM REMODEL DETAILS

UNIVERSITY OF CALIFORNIA, MERCED

**By: University of California, Merced
University's Representative**

Wenbo Yuan
Sr. Project Director

End of Addendum No. 3
ADDENDUM NO. 3

GENERAL NOTES			COMMON ABBREVIATIONS		
<div>1. THESE DRAWINGS ARE DIAGRAMATIC AND MAY NOT CONTAIN ALL THE REQUIREMENTS OR INFORMATION OF THE COMPLETED PROJECT. THE CONTRACTOR SHALL BE RESPONSIBLE TO FIELD VERIFY, ACCOMMODATE ACTUAL FIELD CONDITIONS AND COORDINATE WITH OTHER TRADES TO PROVIDE A COMPLETE FINISHED SPACE TO MEET UNIVERSITY REQUIREMENTS.</div> <div>2. ALL WORK SHALL COMPLY WITH THE CURRENT APPROVED EDITION ALL CALIFORNIA BUILDING CODES, AS AMENDED BY LOCAL ORDINANCES. THE CONTRACTOR SHALL BE RESPONSIBLE FOR COORDINATING ANY ADJUSTMENTS TO THE MECHANICAL, ELECTRICAL AND FIRE SPRINKLER DESIGN TO MEET CURRENT CODE REQUIREMENTS AND PROJECT STANDARDS.</div> <div>3. THE CONTRACTOR SHALL FURNISH ALL LABOR, MATERIALS, PERMITS, FEES AND EQUIPMENT SPECIFIED, INDICATED OR IMPLIED IN THESE DOCUMENTS TO ACCOMPLISH THE CONSTRUCTION IN A PROFESSIONAL, WORKMANLIKE MANNER. ANY DISCREPANCIES BETWEEN THE CONSTRUCTION TASKS INDICATED AND LOCAL CODES AND/OR ORDINANCES SHALL BE BROUGHT TO THE IMMEDIATE ATTENTION OF THE UNIVERSITY'S PROJECT MANAGER FOR RESOLUTION BEFORE PROCEEDING WITH THE WORK.</div> <div>4. THE CONTRACTOR TO VERIFY AND COORDINATE ROUTING OF DUCTWORK, CONDUIT, PIPING, ETC. WITH EACH DISCIPLINE AND WITH STRUCTURE. ANY SHOP DRAWINGS SHALL BE MADE BY THE SUBCONTRACTOR SHOWING OVERLAY OF ALL DISCIPLINES. THE ROUTING OF ALL DUCTWORK, CONDUIT, PIPING, ETC. IS TO BE FIELD VERIFIED. IT IS THE CONTRACTOR'S RESPONSIBILITY TO MAKE ADJUSTMENTS OR ANY MODIFICATIONS NECESSARY TO PROVIDE THE DESIRED FUNCTION OF THE SYSTEM.</div> <div>5. CONTRACTOR SHALL KEEP PREMISES (WORK AREA) CLEAN DAILY, BROOM CLEAN AT PROJECT COMPLETION, AND SHALL REMOVE ALL REFUSE FROM SITE. ALL REMOVED MATERIALS, REFUSE, AND DEBRIS SHALL BE PROPERLY DISPOSED OF, COORDINATE WITH UNIVERSITY'S REPRESENTATIVE BEFORE HAULING FROM SITE.</div> <div>6. RESPONSES TO THE FINAL WALK-THRU PUNCH LIST SHALL BE PROVIDED WITHIN A WEEK AFTER THE WALK-THRU.</div> <div>7. IF AN INSTALLATION OR MOUNTING DETAIL IS NOT SHOWN ON THE DRAWINGS, THE WORK IS TO BE COMPLETED IN A PROFESSIONAL WORKMANLIKE MANNER CONFORMING TO MANUFACTURERS', SAGWA, APPLICABLE CODE OR INDUSTRY STANDARD RECOMMENDATIONS.</div> <div>8. ALL THE DROPS AND RISES IN DUCTWORK, CONDUIT OR PIPING MAY NOT BE SHOWN, OFFSET, DROP OR RISE TO ACCOMMODATE FIELD CONDITIONS. CONTRACTOR TO VERIFY MOUNTING ELEVATION IS COORDINATED WITH (E) DUCTWORK, (E) CABLE TRAY, (E) CONDUIT, OR (E) PIPING ELEVATION AND LOCATION.</div> <div>9. CONTRACTOR TO INFORM UNIVERSITY'S PROJECT MANAGER OF WHERE AND WHEN CUTTING OR REMOVAL OF DUCTWORK, CONDUIT OR PIPING IS TO TAKE PLACE WHEN IT MAY AFFECT DISTRIBUTION TO OTHER PARTS OF THE BUILDING.</div> <div>10. ANY DEMOLITION WORK NEEDED IS TO BE VERIFIED BY THE CONTRACTOR. CONTRACTOR SHALL REPORT ANY ISSUES OR DISCREPANCIES TO UNIVERSITY'S PROJECT MANAGER PRIOR TO START OF ANY WORK.</div> <div>11. THE CONTRACTOR SHALL INSPECT JOB SITE TO VERIFY FIELD CONDITIONS PRIOR TO THE START OF WORK. NOT ALL EXISTING CONDITIONS ARE INDICATED ON THE PLANS.</div> <div>12. MAINTAIN ALL MECHANICAL, PLUMBING, ELECTRICAL, ALARM, AND TELECOM SYSTEMS IN SERVICE OUTSIDE OF THE AREA OF NEW WORK UNDER THIS PHASE OF WORK. PROVIDE REQUIRED MEANS OF MAINTAINING CONTINUITY AND OPERATION OF THESE SYSTEMS.</div>			<div>A-B ANCHOR BOLT</div> <div>AL ALUMINUM</div> <div>A/E ARCHITECT/ENGINEER</div> <div>ARCH ARCHITECTURAL</div> <div>ASPH ASPHALT</div> <div>AVC AUDIO/VIDEO CONSULTANT</div> <div>BLC BUILDING</div> <div>BLK BLOCK</div> <div>BLC BLOCKING</div> <div>BM BEAM</div> <div>BT BOTTOM</div> <div>BUR BUILT UP ROOFING</div> <div>BRC CALIFORNIA BUILDING CODE</div> <div>C.J. CONTROL JOINT</div> <div>CLG CEILING</div> <div>CLG CALUING</div> <div>CMU CONC MASONRY UNIT</div> <div>COL COLUMN</div> <div>COMP COMPOSITE</div> <div>CONC CONCRETE</div> <div>CONST CONSTRUCTION</div> <div>CONT CONTINUOUS</div> <div>DBL DOUBLE</div> <div>DIL DETAIL</div> <div>DIA DIAMETER</div> <div>DWG DIAGRAM</div> <div>DIM DIMENSION</div> <div>DISP DISPENSER</div> <div>DR DOOR</div> <div>DRWG(S) DRAWING(S)</div> <div>DSA DOWNSPOUT</div> <div>DS DIVISION OF THE STATE ARCHITECT</div> <div>(E) EAST</div> <div>E EXISTING</div> <div>EA EACH</div> <div>EJ EXPANSION JOINT</div> <div>EL ELEVATION</div> <div>ELC ELECTRICAL (A)</div> <div>EO EOLAL</div> <div>EQUIP EQUIPMENT</div> <div>EXH EXHAUST</div> <div>EXST EXISTING (SEE (E))</div> <div>EXP EXPANSION</div> <div>FB FLOOR</div> <div>FD FLOOR DRAIN</div> <div>TDN FOUNDATION</div> <div>FF FINISH</div> <div>FF FINISH</div> <div>FFR FLOOR</div> <div>F.O.C. FACE OF CONC.</div> <div>F.O.F. FACE OF FINISH</div> <div>F.M. FACE OF MASONRY</div> <div>F.O.S. FACE OF STUD</div> <div>FTG FOOT OR FEET</div> <div>FTG FOOTING</div> <div>FLR FLOOR</div> <div>GA GAUGE</div> <div>GALV GALVANIZED</div> <div>G.I. GALVANIZED IRON</div> <div>GL GLASS OR GLAZING</div> <div>GR GR</div> <div>GSW GALVANIZED SHEET MTL.</div> <div>GYP Gypsum</div> <div>HB HOLLOW CORE</div> <div>HC HEADER</div> <div>HDR HEADER</div> <div>H.M. HOLLOW METAL</div> <div>HT HEIGHT</div> <div>ICU CONC MASONRY UNIT</div> <div>IBC INTERNATIONAL BUILDING CODE</div> <div>ID. INSIDE DIAMETER</div> <div>IN INCH OR INCHES</div> <div>INS INSULATION</div> <div>INV INVERT</div> <div>JOIST JOIST</div> <div>JOINT JOINT</div> <div>JT JOINT</div> <div>KPL KICKPLATE</div> <div>LAM LAMINATE</div> <div>LAG LAG BOLT</div> <div>LT LIGHT</div> <div>MAX MAXIMUM</div> <div>M.B. MACHINE BOLT</div> <div>MECH MECHANICAL</div> <div>MEMB MEMBRANE</div> <div>METL METAL</div> <div>MFR MANUFACTURER</div> <div>MIN MINIMUM</div> <div>MISC MISCELLANEOUS</div> <div>MTD MOUNTED</div> <div>MU MASONRY UNIT</div> <div>N NORTH</div> <div>N NEW</div> <div>NOT APPLICABLE</div> <div>NOT IN CONTRACT</div> <div>NO NUMBER</div> <div>NPT NATIONAL PIPE THREAD</div> <div>NIS NOT TO SCALE</div> <div>OC ON CENTER</div> <div>OD OUTSIDE DIAMETER</div> <div>OFI OWNER FURNISHED/</div> <div>OFI CONTRACTOR INSTALLED</div> <div>OPNG OPENING</div> <div>PL PLATE</div> <div>PLAS PLASTER</div> <div>PLWD PLUMED</div> <div>PAIR PAIR</div> <div>P.T. PAPER TOWEL</div> <div>PVC POLYVINYL CHLORIDE</div> <div>RA RETURN AIR</div> <div>ROD ROD</div> <div>REG REGISTER</div> <div>REIN REINFORCE</div> <div>RECD REINFORCED</div> <div>RWL RAIN WATER LEADER</div> <div>S SOUTH</div> <div>SC SOILD CORE</div> <div>SCHED SCHEDULE</div> <div>SD STORM DRAIN</div> <div>SECT SECTION</div> <div>SEE ELECTRICAL DRAWINGS</div> <div>SHT SHEET</div> <div>SIM SIMILAR</div> <div>SM SHEET METAL</div> <div>SQ SQUARE</div> <div>SS STAINLESS STEEL</div> <div>SSK SERVICE SINK</div> <div>STD STANDARD</div> <div>STL STEEL</div> <div>STRL STRUCTURAL</div> <div>SURF SURFACE</div> <div>SUSP SUSPENDED</div> <div>SYM SYMMETRICAL</div> <div>T.B.D. TO BE DETERMINED</div> <div>T&B TOP & BOTTOM</div> <div>TC TOP OF CURB OR CONCRETE</div> <div>THR THROUGH</div> <div>THRU THRESHOLD</div> <div>TOW TOP OF WALL</div> <div>TOS TOP OF CONCRETE SLAB FLOOR</div> <div>TYP TYPICAL</div> <div>UN UNLESS OTHERWISE NOTED</div> <div>VERT VERTICAL</div> <div>W WEST</div> <div>W WITH</div> <div>WG WIRE GLASS</div> <div>WH WATER HEATER</div> <div>WI WROUGHT IRON</div> <div>W/O WITHOUT</div> <div>WP WEATHERPROOF OR WATERPROOF</div> <div>WWM WELDED WIRE MESH</div> <div>YARD YARD</div>		
FINISH SCHEDULE AND NOTES			SCOPE OF WORK		
INTERIOR COLOR/FINISH/PRODUCT SCHEDULE			THIS CLASSROOM PROJECT CONSIST OF:		
PRODUCT/MATERIAL	MANUFACTURER	STYLE/TYPE	COLOR	NOTES	
ACOUSTICAL PANEL	WALL TECHNOLOGY	A100 SERIES WITH BEVELED EDGE	SEE PANEL FABRIC	Z-CLIP INSTALLATION METHOD	
ACOUSTICAL PANEL FABRIC FINISH	MAHARAM	MORSE-901720	004 CLIFF	...	
ACOUSTICAL CEILING TILE	ARMSTRONG	CIRRUS 569 – BEVELED REGULAR	WHITE (FF)	CIRRUS TILE & LAY-IN	
ACOUSTICAL CEILING TILE GRID SYSTEM	ARMSTRONG	SUPAPRINE 9/16" EXPOSED TEE	WHITE (FF)	SEE DETAIL 1 TO 4 ON SHEET A-571	
CARPET TILES	BENTLEY PRINCE STREET, INC.	TALL STORY-41TZA40220T / TILE	JUST WALKED IN-400405	24"x24" TILE, QUARTER-TURN GLUE DOWN INSTALLATION	
WALK OFF MATS	MATS, INC.	3/8" THICK SOFT GRID – 48" WIDTH	GRAY (FF)	LOOSE LAY AND CUT TO FIT PERIMETER SHAPE	
DOOR THRESHOLD TO MAT TRANSITION	ALORS INC. PVC RAMP		BLACK (FF)	GLUE DOWN INSTALLATION METHOD	
CARPET TO MAT TRANSITION	JOHNSONITE, INC.	CCA-XX ADAPTOR	BLACK (FF)	GLUE DOWN WITH WIERED CORNERS	
(E) PAINTED WALLS (MATCH COLOR)	PITTSBURG PAINT (OR MATCH COLOR)		516-2 ANTIQUE WHITE	TOUCH-UP EXIST. WALL COLOR AS REQUIRED	
(E) WALL WOOD BASE TRIM PAINT	KELLY-MOORE (OR MATCH COLOR)	INTERIOR SEMI-GLOSS	KM93J3-GRANITE CLIFF	PREP. EXISTING BASE FOR NEW PAINT COLOR	
PROJECTION SCREEN – OFCI	DRAPER	PREMIER MOTORIZED FRONT PROJECTION	HI DEF GREY	WALL MOUNT (101375P OR EQUAL) SEE DET. 10/A-571	
SPEAKER SYSTEM FOR VIDEO – OFCI	BY AVC AND UNIVERSITY	POWERED ZOOM AND FOCUS, DLP	BY MANUFACTURER	PROJECTION SIZE TO 300" DIAGONAL MINIMUM.	
PROJECTOR CEILING MOUNT – OFCI	CHIEF CHIEF CHIEF	CM4655 – 2'x2' CEILING TILE PLATE	WHITE (FF)	MAY BE WALL OR CEILING MOUNT SYSTEM	
		OMS SPEED-CONNECT FIXED EXTENSION PROJECTOR STEEL SECURITY OAGE	BLACK (FF)	1-1/2" NPT COLUMN – LENGTH TO CLEAR LIGHTS	
CEILING SUPPLY DIFFUSERS	MAILOR	UN" 24"x24" – TYPE L	WHITE (FF)	POKA-EXTRA LARGE OR POKA LARGE. SEE DETAIL 9 ON SHEET A-571.	
CEILING RETURN GRILLE	MAILOR	4360 24"x48" – TYPE L	WHITE (FF)	STANDARD 4-WAY BLOW PATTERN	
				DROP FACE TO CONFORM WITH REGULAR CEILING TILES	

GENERAL FINISH NOTES.

ALL MANUFACTURERS PRODUCTS NOTED IN FINISH SCHEDULE ARE FOR REFERENCE ONLY. COLOR, STYLE, PATTERNS AND PRODUCT QUALITY WITH EQUAL OR SIMILAR PRODUCTS SHALL MATCH FINISH SCHEDULE AND SHALL BE APPROVED BY UNIVERSITY REPRESENTATIVE.

COMPONENTS LISTED AS OFCI SHALL BE DESIGN/BUILD SUPPLIED BY THE UNIVERSITY AND INSTALLED BY THE CONTRACTOR. INSTALLATION SHALL INCLUDE ALL ELECTRICAL, DATA, CABLE, HARDWARE, MOUNTING, CONDUIT, BRACING, ETC. FOR A COMPLETE INSTALLATION OF EACH COMPONENT READY FOR USE.

INTERIOR FINISH NOTES.

A. FOR ADDITIONAL NOTES AND INFORMATION SEE FLOOR PLANS, REFLECTED CEILING PLANS AND INTERIOR ELEVATIONS.

B. SEE SPECIFICATIONS OR MANUFACTURER'S LITERATURE FOR MATERIALS LISTED.

C. WALL AND CEILING MATERIALS SHALL NOT EXCEED THE FLAME SPREAD CLASSIFICATIONS IN 2010 C.B.C. TABLE 803.9

D. ALL METALS EXPOSED TO VIEW SHALL BE FACTORY FINISHED OR FIELD PAINTED.

E. ALL PAINT FINISHES SHALL BE SATIN OR EGGSHELL. VERIFY WITH OWNER.

F. FOR ANY CONDITION THAT IS NOT IDENTIFIED, PROVIDE MATERIAL OR FINISH THAT CLOSELY MATCHES SIMILAR CONDITIONS IN OTHER AREAS OF ROOM OR BUILDING.

G. SEE SHEET A-271 FOR NEW ROOM DESIGN AND SEE SHEET A-171 FOR EXISTING ROOM CONDITIONS. ANY EXISTING EXPOSED FINISH THAT IS TO REMAIN SHALL BE CLEANED, PATCHED, REPAIRED OR REFINISHED TO LIKE-NEW CONDITION.

SCOPE OF WORK		
THIS CLASSROOM PROJECT CONSIST OF:		
1. WORK ON THE CLASSROOM OFFICE BUILDING (COB) FIRST FLOOR LEVEL, CLASSROOMS 110 AND 114.		
2. REMOVAL OF WALL MOUNTED FIXTURES, FURNISHING, AND EQUIPMENT AS REQUIRED ON THE NORTH AND SOUTH WALLS OF CLASSROOMS 110 AND 114.		
3. INSTALLATION OF NEW CARPET WITH TRANSITION MOLDING.		
4. REMOVE, REPAIR AND RE-INSTALL EXTERIOR DOOR SILLS TO ELIMINATE LEAKS FROM RAIN.		
5. PATCH, PRIME, AND PAINT EXISTING GYPSUM WALL FINISH TO LIKE NEW CONDITION. PAINT (E) WOOD WALL BASE. COLOR – SEE FINISH SCHEDULE.		
6. INSTALL ACOUSTICAL PANELS ON WALLS AND RE-INSTALL ANY FIXTURES, FURNISHINGS, AND EQUIPMENT REMOVED FOR WORK TO LIKE NEW CONDITION.		
7. INSTALLATION OF NEW CEILING PENDANT MOUNTED VIDEO PROJECTOR AND WALL MOUNTED RETRACTABLE SCREEN IN CLASSROOM 114.		
8. ADD SEISMIC RESTRAINT SYSTEM TO (E) VIDEO PROJECTOR PENDANT MOUNT IN CLASSROOM 110. SYSTEM SHALL BE DESIGN/BUILD AS RECOMMENDED BY PENDANT MOUNT MANUFACTURER AND SHALL BE ABOVE NEW ACOUSTICAL CEILING FINISH. SYSTEM SHALL BE INDEPENDENT FROM NEW CEILING.		
9. INSTALL FIRE SPRINKLER EXTENSION FROM EXISTING SYSTEM TO EXTEND SPRINKLER HEADS BELOW NEW LAV-IN-FIRE SYSTEM TILE GRID SYSTEM TO MEET FIRE DEPARTMENT REQUIREMENTS. THIS SHALL BE A DESIGN/BUILD SYSTEM MEETING APPLICABLE NFPA CODES AND CALIF. FIRE DEPARTMENT REQUIREMENTS. THERE ARE NO DRAWINGS OR SPECIFICATIONS RELATED TO THIS WORK AS PART OF THIS PACKAGE.		
10. RESTRUCTURE EXISTING WALL MOUNTED ILLUMINATED "EXIT" SIGNS AT EACH DOOR TO CEILING MOUNTED SYSTEM IN NEW ACOUSTICAL LAY-IN CEILING SYSTEM. THIS SHALL BE DESIGN/BUILD WORK MEETING UNIVERSITY AND CALIF. FIRE DEPARTMENT REQUIREMENTS. THERE ARE NO DRAWINGS OR SPECIFICATIONS RELATED TO THIS WORK AS PART OF THIS PACKAGE.		
11. INSTALL NEW 2'x2' LAV-IN ACOUSTICAL CEILING SYSTEM.		
12. PROVIDE RECTANGLE TO ROUND TRANSITION AT EACH (E) HVAC SUPPLY VENT REGISTER OPENING. EXTEND 10" ROUND BLACK FLEX DUCT FROM TRANSITION TO CEILING DIFFUSER. THIS SHALL BE DESIGN/BUILD WORK. SEE SCHEMATIC LAYOUT ON SHEET A-271. ALL HVAC DUCTWORK SHALL BE CONSTRUCTED AND INSTALLED PER SMACNA "HANG DUCT CONSTRUCTION STANDARDS – METAL AND FLEXIBLE, THIRD EDITION, 2005"		
13. REPLACE ANY BURNED OUT LIGHT BULBS, REPAIR, AND CLEAN EXISTING PENDANT LIGHT FIXTURES TO LIKE NEW CONDITION. ADD SEISMIC RESTRAINT SYSTEM, AND PENDANT LIGHT FIXTURES SHALL BE DESIGN/BUILD SYSTEM MEETING APPLICABLE NFPA CODES AND CALIF. FIRE DEPARTMENT REQUIREMENTS. THERE ARE NO DRAWINGS OR SPECIFICATIONS RELATED TO THIS WORK AS PART OF THIS PACKAGE.		
14. PROVIDE WALK-OFF FLOOR MAT AT EACH ENTRY DOOR.		
15. GLASS BREAK DETECTION WORK BY OTHERS.		
16. ALL ELECTRICAL WORK SHALL CONFORM TO THE REQUIREMENTS OF THE 2011 NATIONAL ELECTRIC CODE (NEC).		
17. ALL PLUMBING WORK SHALL CONFORM TO THE 2010 CALIFORNIA PLUMBING CODE.		

DEFERRED APPROVAL

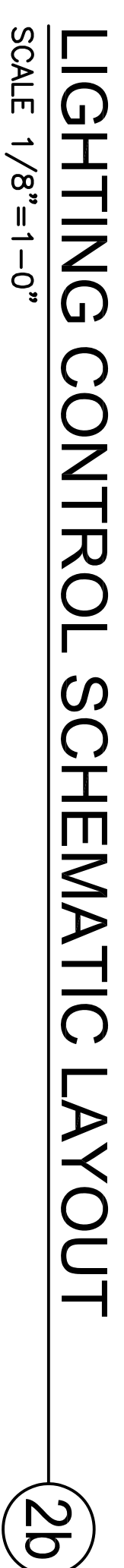
DEFERRED SUBMITTALS ARE DEFINED AS THOSE PORTIONS OF THE DESIGN THAT ARE NOT SUBMITTED AT THE TIME OF THE APPLICATION OF ANY SUBMITTAL. ITEMS SHALL HAVE THE PRIOR APPROVAL OF THE BUILDING OFFICIAL. THE REGISTERED DESIGN REVIEWER BY THE BUILDING OFFICIAL.

DEFERRED SUBMITTALS ARE DEFINED AS THOSE PORTIONS OF THE DESIGN THAT ARE NOT SUBMITTED AT THE TIME OF THE APPLICATION OF ANY SUBMITTAL. ITEMS SHALL HAVE THE PRIOR APPROVAL OF THE BUILDING OFFICIAL. THE REGISTERED DESIGN REVIEWER BY THE BUILDING OFFICIAL.

DEFERRED SUBMITTALS ARE DEFINED AS THOSE PORTIONS OF THE DESIGN THAT ARE NOT SUBMITTED AT THE TIME OF THE APPLICATION OF ANY SUBMITTAL. ITEMS SHALL HAVE THE PRIOR APPROVAL OF THE BUILDING OFFICIAL. THE REGISTERED DESIGN REVIEWER BY THE BUILDING OFFICIAL.

CAMPUS MAP AND KEY PLAN		
<div>AREA OF WORK</div> <div>FIRST FLOOR</div> <div>BUILDING KEY PLAN</div> <div>CLASSROOM AND OFFICE BUILDING (COB)</div> <div>CAMPUS MAP</div> <div>NO SCALE.</div>		
SHEET INDEX		
DRAWING ORDER	DRAWING NUMBER	DRAWING TITLE
1	A071	COVER SHEET, SYMBOLS, NOTES, AND SCHEDULES
2	A171	EXISTING FLOOR PLANS AND REFLECTED CEILING PLANS
3	A172	EXISTING INTERIOR ELEVATIONS
4	A271	NEW FLOOR PLANS AND REFLECTED CEILING PLANS
5	A272	NEW INTERIOR ELEVATIONS
6	A273	NEW INTERIOR ELEVATIONS (BD ALTERNATE)
7	A274	CLASSROOM REMODEL DETAILS

<div>UC Merced</div> <div>University of California, Merced</div> <div>Classroom and Office Building</div> <div>Rooms 110 & 114</div> <div>Renovations</div>		
<div>Project Name:</div> <div>Classroom and Office Building</div> <div>Rooms 110 & 114</div> <div>Renovations</div>		
<div>Project Number:</div> <div>907015</div>		
<div>Civil Engineer:</div> <div>Stantec</div> <div>Stantec Consulting Services Inc.</div> <div>10000 Zanker Road, Suite 200</div> <div>San Jose, CA 95134</div> <div>(408) 551-9999</div> <div>(408) 551-9999 fax</div> <div>www.stantec.com</div>		
<div>Mechanical Engineer:</div> <div>Stantec Consulting Services Inc.</div> <div>10000 Zanker Road, Suite 200</div> <div>San Jose, CA 95134</div> <div>(408) 551-9999</div> <div>(408) 551-9999 fax</div> <div>www.stantec.com</div>		
<div>Copyright Reserved</div> <div>Copyright © 2012 by Stantec Consulting Services Inc. All rights reserved. No part of this publication may be reproduced, stored in a retrieval system, or transmitted, in any form or by any means, electronic, mechanical, photocopying, recording, or by any information storage and retrieval system, without the prior written permission of Stantec Consulting Services Inc. The copyright in this drawing and any other drawings or documents created by Stantec Consulting Services Inc. shall remain the property of Stantec Consulting Services Inc. All other drawings or documents created by Stantec Consulting Services Inc. shall remain the property of Stantec Consulting Services Inc. The copyright in this drawing and any other drawings or documents created by Stantec Consulting Services Inc. shall remain the property of Stantec Consulting Services Inc. All other drawings or documents created by Stantec Consulting Services Inc. shall remain the property of Stantec Consulting Services Inc.</div>		
<div>Drawing Stage:</div> <div>100% CONSTRUCTION DOCUMENTS</div>		
<div>Seals and Signatures:</div>		
<div>UNIVERSITY OF CALIFORNIA, MERCED</div> <div>FIRE MARSHAL</div> <div>Approval of this plan does not constitute approval of the project or the design. The design is the property of Stantec Consulting Services Inc. and is not to be used for any other project without the prior written permission of Stantec Consulting Services Inc. The copyright in this drawing and any other drawings or documents created by Stantec Consulting Services Inc. shall remain the property of Stantec Consulting Services Inc. All other drawings or documents created by Stantec Consulting Services Inc. shall remain the property of Stantec Consulting Services Inc.</div>		
<div>DESIGNATION STAMP</div> <div>FILE NO. 01-UC-MERCED</div> <div>APP. NO.</div> <div>AC</div> <div>FIS</div> <div>SS</div> <div>DATE</div>		
<div>Drawn By:</div> <div>MH, BV, BW</div>		
<div>Revision Date:</div> <div>08.26.2012</div>		
<div>Plot Date:</div> <div>08.26.2012</div>		
<div>Scale:</div> <div>AS NOTED</div>		
<div>Key Plan</div>		
<div>ADDENDUM 3</div>		
<div>COVER SHEET</div> <div>SYMBOLS</div> <div>NOTES AND SCHEDULE</div>		
<div>Sheet Number:</div> <div>A-071</div>		



	KEYNOTES
1	(N) 48" x 72" WALK-OFF MAT - SEE FINISH SCHEDULE
2	(N) FLOOR TRANSITION STRIP - SEE FINISH SCHEDULE AND SEE DETAILS
3	PROVIDE/INSTALL ONE LAYER OF 5/8" TYPE X GYPSUM BOARD. TEXTURE TO MATCH EXISTING WALLS, PRIME AND PAINT. ON SOUTH WALL OF ROOM 114.
4	(N) 2"x2" CARPET TILE FLOOR FINISH - SEE FINISH SCHEDULE
5	(E) CEILING PENDANT LIGHT FIXTURES, TO REMAIN. PROVIDE GROMMET AT EACH CEILING TILE PENETRATION AND SECURE BRACING FOR (E) LIGHT SUPPORT CABLES. SEE NOTE 7 ON THIS SHEET.
6	(N) ACOUSTICAL CEILING SYSTEM, 24"x24" - SEE FINISH SCHEDULE AND SEE DETAILS 1 TO 4 ON SHEET A-571.
7	(N) CEILING SUPPLY DIFFUSER, MAJOR 20" x 24"x24" TYPE L, FIELD VERRY FINAL LOCATION TO AVOID CONFLICTS WITH OTHER SYSTEMS.
8	(N) CEILING RETURN GRILLE, MAJOR 4365, 24"x48" TYPE L, FIELD VERRY FINAL LOCATION TO AVOID CONFLICTS WITH OTHER SYSTEMS.
9	NOT USED
10	NOT USED
11	(N) VIDEO PROJECTOR SYSTEM IN CLASSROOM 114 BY OTHERS. SEE FINISH SCHEDULE ON SHEET A-071 AND SEE DETAIL 9 ON SHEET A-571.
12	(N) WALL MOUNTED PROJECTION SCREEN IN CLASSROOM 114 TO MATCH SCREEN IN CLASSROOM 110. SEE FINISH SCHEDULE AND SEE DETAIL 10/A-571.
13	PROVIDE OPENING AND GROMMET IN CEILING TILE FOR EXISTING PIPE SUPPORT USED FOR PENDANT MOUNTED PROJECTOR. PIPE SHALL NOT INTERFERE WITH EXPOSED TILE, MAIN ROUNDS OR CROSS TEES.
14	PROVIDE METAL FILLER PIECE OR EXTENDED FLANGE WALL MOLDING TO AVOID CEILING TILES LESS THAN 4" WIDE. USE THE BAR AND SYSTEM MANUFACTURER COLOR TO MATCH THE BAR FINISH.
15	(N) LOCATION FOR IT/AV EQUIPMENT RACK (SIZE 22Wx17Dx47H, CONSULT WITH UNIVERSITY REPRESENTATIVE FOR SPECIFIC REQUIREMENTS.
16	NOT USED
17	NOT USED
18	NEW METAL CEILING TILE PLATE FOR CEILING MOUNTED VIDEO PROJECTOR SYSTEM BY A/C. FACTORY PAINT TO MATCH CEILING COLOR AND INSTALL PER MANUFACTURER SPECIFICATIONS. SEE DETAIL 9/A-571.

NOTES	
1	EXTEND EXISTING FIRE SPRINKLER SYSTEM TO PROVIDE HEADS BELOW THE ACOUSTICAL CEILING SYSTEM. DESIGN SHALL BE PROVIDED BY DESIGN/BUILD FIRE SPRINKLER SUBCONTRACTOR. SEE DETAIL 1/4-5/71.
2	FOR REMOTE 3/4 THE FOLLOWING SHALL APPLY: (F) EXISTING ACOUSTICAL CEILING SHALL BE REMOVED, LAYER OF GYPSUM BOARD SHALL BE REMOVED, AND PAINT OF 6 INCHES ABOVE THE NEW ACOUSTICAL CEILING THE PERIMETER WALL WOULDING FOR FULL WIDTH OF EACH GYPSUM BOARD FINISHED WALL PLANE. * RESET EXISTING ELECTRICAL/DATA/TELECOM RECESSED WALL BOXES OR ADD EXTENSIONS TO EXISTING BOXES TO ALLOW LIGHT RECEPTACLE TO FLUSH WITH COVER PLATE. PROVIDE CONT. BEAD OF ACOUSTICAL SEALANT AT JOINT BETWEEN BOX AND NEW LAYER OF GYPSUM BOARD. (G) ACOUSTICAL WALL PAINTS IN CLASSROOMS SHALL BE REMOVED AND DISCARDED. AT THIS TIME THERE IS NO REQUIREMENT FOR THEM TO BE STORED ON SITE FOR USE ON FUTURE PROJECTS. SEE SHEET A-772.
3	(F) ACOUSTICAL WALL PAINTS IN CLASSROOMS SHALL BE REMOVED AND DISCARDED. AT THIS TIME THERE IS NO REQUIREMENT FOR THEM TO BE STORED ON SITE FOR USE ON FUTURE PROJECTS. SEE SHEET A-772.
4	(E) EXTERIOR DOOR SILL (3 TOTAL) - REMOVE, REPAIR AND RE-INSTALL WITH CONTINUOUS BEADS OF SEALANT TO FORM WATERTIGHT CONDITION AT DOOR OPENING FROM STUDY DOOR FRAME AND DOOR SILL. SEE DETAIL 6/4-5/71.
5	REPOSITION EXISTING WALL MOUNTED ILLUMINATED "EXIT" SIGNS AT EACH DOOR TO CEILING MOUNTED SYSTEM IN NEW ACOUSTICAL LAY-IN CEILING. ALIGN WITH ORIGINAL LOCATION AND MOUNT USING SIGN MANUFACTURER'S SYSTEM FOR THIS CEILING CONDITION.
6	EACH EXISTING WALL MOUNTED ADDRESSABLE FIRE ALARM NOTIFICATION SHALL REMAIN IN EXISTING LOCATION REMOVE WITH REMOVAL OF EXISTING ACOUSTICAL PANEL AND RE-INSTALL WITH NEW PANEL USING SIMILAR ATTACHMENT METHOD. SEE SHEET A-772.
7	REMOVAL HUNG LIGHT FIXTURES SHALL REMAIN SUPPORTED DIRECTLY FROM CEILING ABOVE. THE CEILING SUSPENSION SYSTEM SHALL NOT PROVIDE ANY DIRECT SUPPORT. ASTM E580 -5-3.7. COORDINATE CEILING MAIN RUNNERS AND CROSS LIEG LOCATION TO AVOID LIGHT FIXTURE SUPPORT CABLES. LIGHT SUPPORT CABLE PENETRATIONS OF CEILING TIERS SHALL HAVE ADAPTER (MATCH CEILING COLOR) TO ALLOW FREE MOVEMENT IN ALL HORIZONTAL DIRECTIONS. PROVIDE SHOP DRAWINGS OF SYSTEM FOR REVIEW AND APPROVAL BY UNIVERSITY PROJECT MANAGER.
8	PAINT ALL WALLS TO MATCH EXISTING COLOR.

Copyright Reserved

The Contractor shall verify and be responsible for all dimensions. DO NOT scale the drawing – any dimensions taken from the drawing are to be verified without exception. The copyright to these designs and drawings are the property of Stattec. Reproduction or use for any purpose other than that authorized by Stattec is forbidden.

Drawing Stage:

100% CONSTRUCTION DOCUMENTS

Seals and Signatures:

UNIVERSITY OF CALIFORNIA, MERCED
FIRE MARSHAL

Approval of this plan does not authorize or approve any omission or deviation from applicable regulations. Final approval is subject to field inspection. One set of approved plans shall be available on the project site at all times.

Reviewed by: _____

Date: _____

UCM Project No.: 906050

IDENTIFICATION STAMP
DIV. OF THE STATE ARCHITECT
FILE NO. 01-UC MERCED
APPL. NO.
AC _____ FLS _____ SS _____
DATE:

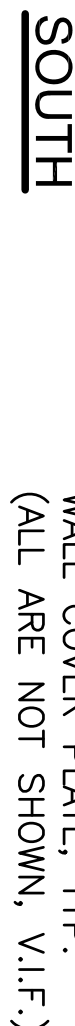
[illegible]

ADDENDUM 3

**Know what's below.
Call before you dig.**

**NEW
FLOOR PLANS &
REFLECTED
CEILING PLANS**

Sheet Number:
A-271

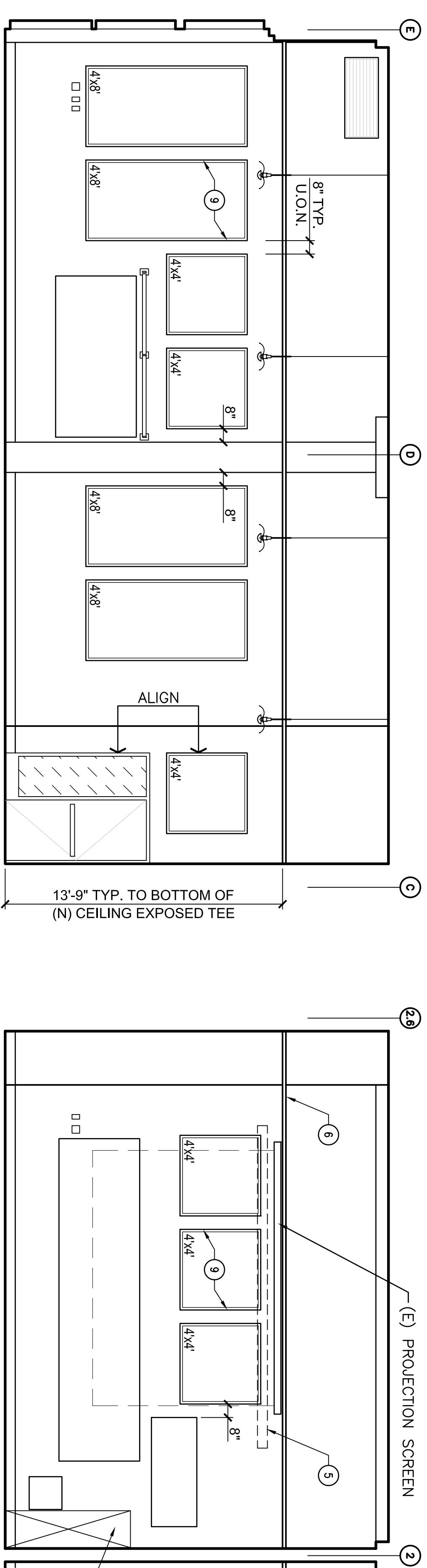
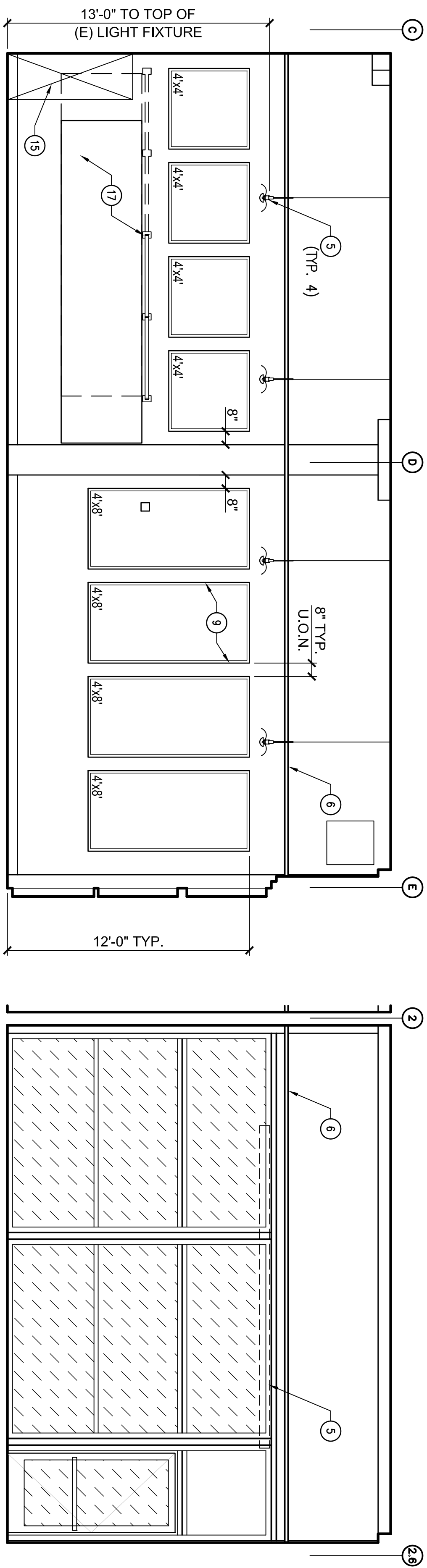
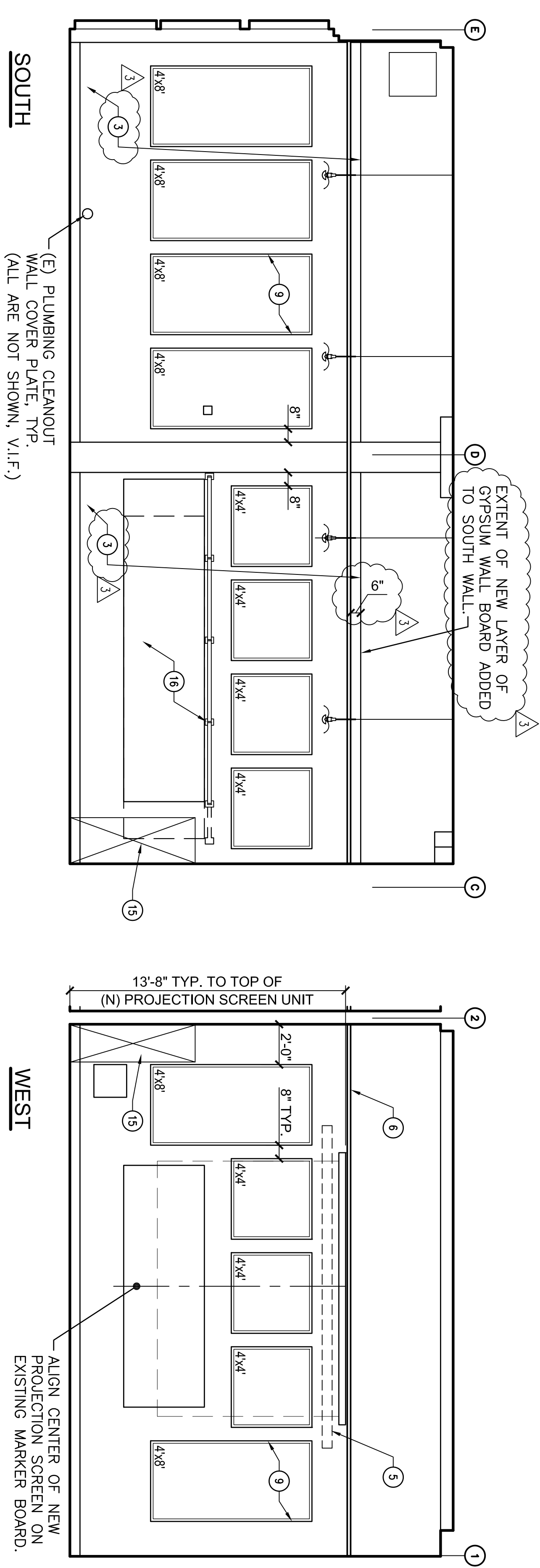
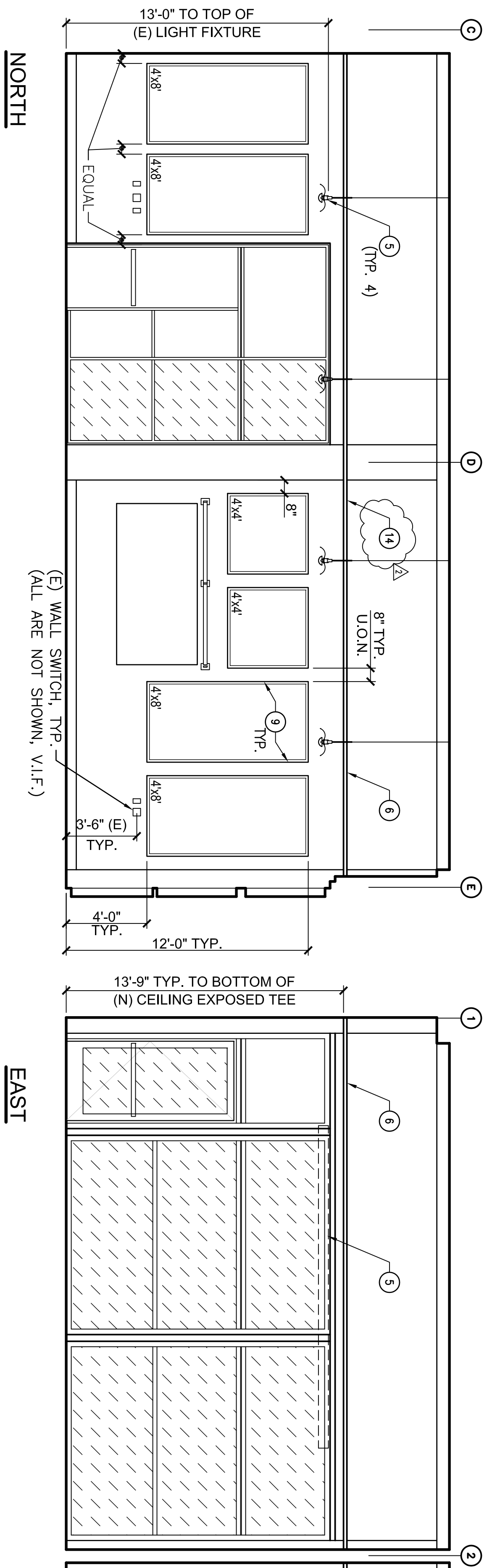


SCALE 1/4"=1'-0"

EAST

WEST

SCALE 1/4"=1'-0"



NOTES
1 EXTEND EXISTING FIRE SPRINKLER SYSTEM TO PROVIDE HEADS BELOW THE ACOUSTICAL CEILING SYSTEM. DESIGN SHALL BE PROVIDED BY DESIGN/BUILD FIRE SPRINKLER SUBCONTRACTOR. SEE DETAIL 1/A-571.
2 FOR KEYNOTE #3 THE FOLLOWING SHALL APPLY: • REMOVE AND RESET EXISTING WOOD BASE OVER NEW LAYER OF GYPSUM BOARD. GYPSUM BOARD TO BE 5/8\"/>
3 (E) ACOUSTICAL WALL PANELS IN CLASSROOMS SHALL BE REMOVED AND DISCARDED AT THE TIME OF REMOVAL. NO REQUIREMENT FOR THEM TO BE STORED ON SITE FOR USE ON FUTURE PROJECTS. SEE SHEET A-272.
4 (E) EXTERIOR DOOR SILLS (3 TOTAL) - REMOVE, REPAIR AND RE-INSTALL WITH CONTINUOUS BEADS OF SEALANT TO FORM WATERIGHT CONDITION AT DOOR OPENING FROM SLAB, DOOR FRAME AND DOOR SILL. SEE DETAIL 6/A-571.
5 REPOSITION EXISTING WALL MOUNTED ILLUMINATED "EXIT" SIGNS AT EACH DOOR TO CEILING MOUNTED SYSTEM IN NEW ACOUSTICAL UN-IT-IN CEILING. ALIGN WITH ORIGINAL LOCATION AND MOUNT USING SIGN MANUFACTURER'S SYSTEM FOR THIS CEILING CONDITION.
6 EACH EXISTING WALL MOUNTED AUDIBLE/VISUAL FIRE ALARM NOTIFICATION SHALL REMAIN IN EXISTING LOCATION. REMOVE WITH REMOVAL OF EXISTING ACOUSTICAL PANEL. ATTACHMENT METHOD. SEE SHEET A-272.
7 PENDANT HUNG LIGHT FIXTURES SHALL REMAIN SUPPORTED DIRECTLY FROM CEILING ABOVE. THE CEILING SUSPENSION SYSTEM SHALL NOT PROVIDE ANY DIRECT SUPPORT. ASIM E280-53.17 COORDINATE TO EXISTING MAIN RUNNERS AND CROSS TIE LOCATION TO ALLOW FOR THE NEW LIGHT FIXTURES. PROVIDE CABLE PENETRATIONS OF CEILING TILES SHALL HAVE ADAPTER (MATCH CEILING COLOR) TO ALLOW FREE MOVEMENT IN ALL HORIZONTAL DIRECTIONS. PROVIDE SHOP DRAWINGS OF SYSTEM FOR REVIEW AND APPROVAL BY UNIVERSITY PROJECT MANAGER.
8 PAINT ALL WALLS TO MATCH EXISTING COLOR.

BID ALTERNATE NOTE:
PROVIDE ACOUSTICAL WALL PANEL WORK ON THIS SHEET A-272a INSTEAD OF ACOUSTICAL WALL PANEL WORK SHOWN ON SHEET A-272. ALL OTHER WORK ARE THE SAME ON TWO SHEETS.

KEYNOTES
1 NOT USED
2 NOT USED
3 PROVIDE/INSTALL ONE LAYER OF 5/8\"/>
4 NOT USED
5 (E) CEILING PENDANT LIGHT FIXTURES TO REMAIN. PROVIDE GROMMET AT EACH CEILING TILE PENETRATION AND SECURE BRACING FOR (E) LIGHT SUPPORT CABLES. SEE NOTE 7 ON THIS SHEET.
6 (N) ACOUSTICAL CEILING SYSTEM, 24\"/>
7 NOT USED
8 NOT USED
9 (N) 1\"/>
10 NOT USED
11 NOT USED
12 (N) WALL MOUNTED PROJECTION SCREEN IN CLASSROOM 114 TO MATCH SCREEN IN CLASSROOM 110. SEE FINISH SCHEDULE AND SEE DETAIL 10/A-571.
13 NOT USED
14 PROVIDE METAL FILLER PIECE OR EXTENDED FLANGE WALL MOLDING TO AVOID CEILING TILES LESS THAN 4\"/>
15 (N) LOCATION FOR IT/AV EQUIPMENT RACK (SIZE 22Wx27Hx74\"/>
16 RELOCATE EXISTING MARKED BOARD AND LIGHT TO A POSITION ADJACENT TO CONCRETE PLASTER AT SAME ELEVATION. ADJUST WIRING AS REQUIRED. INSTALL USING SIMILAR METHOD OF ORIGINAL MOUNTING. PATCH AND REPAIR AS REQUIRED.
17 RELOCATE EXISTING MARKED BOARD TO A POSITION ADJACENT TO CONCRETE PLASTER AT SAME ELEVATION. MOVE LIGHT FIXTURE TO LOCATION USING EXISTING MOUNTING LOCATION. ADJUST WIRING AS REQUIRED. INSTALL USING SIMILAR METHOD OF ORIGINAL MOUNTING. PATCH AND REPAIR AS REQUIRED.
18 NEW METAL CEILING TILE PLATE FOR CEILING MOUNTED VIDEO PROJECTION SYSTEM BY A/C. FACTORY PAINT TO MATCH CEILING COLOR AND INSTALL PER MANUFACTURER SPECIFICATIONS. SEE DETAIL 9/A-571.

UC Merced

University of California
Merced, California

Project Name:

Classroom and
Office Building
Rooms 110 & 114
Renovations

Civil Engineer:

907015

Stantec Consulting Services Inc.

1016 J 20th Street
Merced, CA 95364
(209) 321-8986 fax
www.stantec.com

Shantec Consulting Services Inc.
MECHANICAL ENGINEER/ELECTRICAL ENGINEER
370 N Wight Court, Suite 210
Merced, CA 95368
(209) 341-1400

Copyright Reserved

The Contractor shall not copy, modify, or be responsible for any use of the drawings or information contained herein for any purpose other than that authorized by Stantec. Any unauthorized use or reproduction of these drawings or information without the written consent of Stantec is prohibited.

Drawing Stage:

100% CONSTRUCTION DOCUMENTS

Seats and Signatures:

UNIVERSITY OF CALIFORNIA, MERCED
FIRE MARSHAL

Any addition or deletion from applicable drawings shall be made in accordance with the University of California, Merced Fire Marshal's approval. One set of approved plans shall be retained by _____.

Date: _____
UCM Project No.: 000050

IDENTIFICATION STAMP

FILE NO. 0-100-MERCED

APPL. NO. _____

AC: _____ FLS: _____ SS: _____

DATE: _____

NO. _____

DESCRIPTION #2 _____

APPENDIX #3 _____

ISSUED DATE _____

08.20.12

Drawn By: _____ MH, BV, BW

Revision Date: _____ 06.26.2012

Plot Date: _____ 06.26.2012

Scale: _____ AS NOTED

Key Plan

811

Know what's Below.
Call before you dig.

NEW

INTERIOR
ELEVATIONS
(BID ALTERNATE)

Sheet Number:

A-272(a)

ADDENDUM 3

