

Project Name: UNIVERSITY OF CALIFORNIA, MERCED
UC MERCED ENVIRONMENTAL SITE WORK PROJECT
Project No.: 660175 1B 19900

ADDENDUM NO. 3
to the
CONTRACT DOCUMENTS
December 1, 2015

- I. Bidder acknowledges that it is the Bidder's responsibility to ascertain whether any Addenda have been issued and if so, to obtain copies of such Addenda. Bidder therefore agrees to be bound by all Addenda that have been issued for this bid.

This Addendum forms a part of the Contract Documents and modifies the original Bidding Documents. The following changes, additions, or deletions shall be made to the following documents as indicated and all other Contract Documents shall remain the same.

Addenda 1 and 2 are included in the bid documents.

II. CLARIFICATIONS

1. Issue Figures 1 – 7. The figures in the bid documents were not legible.
2. Jobwalk sign-in sheet.

III. BIDDING/CONTRACT DOCUMENTS AND DIVISION 1 SPECIFICATIONS

1. NONE

IV. DIVISION 2

1. Not Applicable

V. DRAWINGS

None

1. Not Applicable

VI. **ATTACHMENTS**

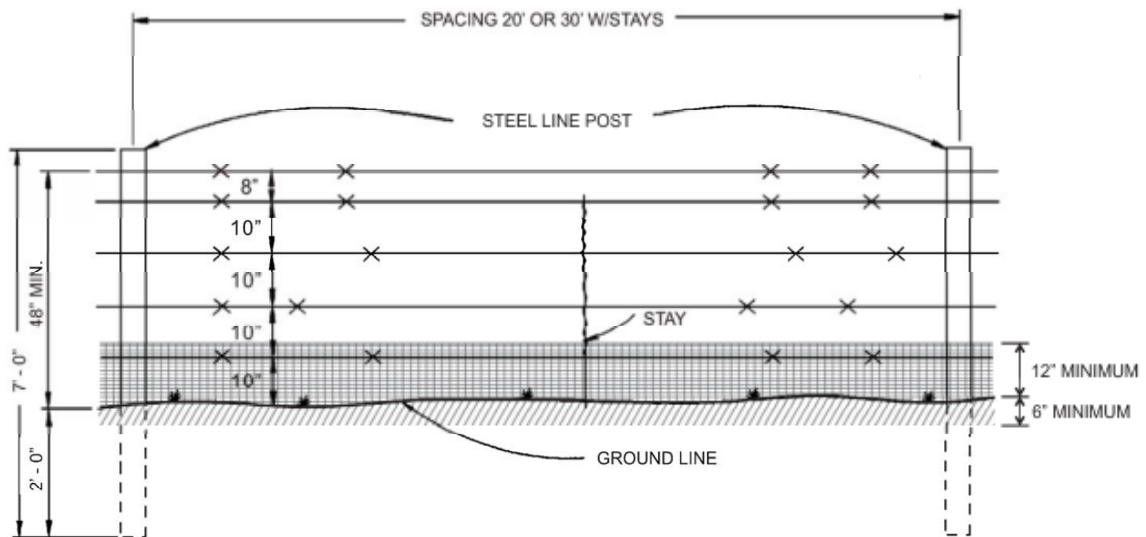
Figure 1	Standard 5 Wire Fence	Figure 2	Salamander Exit Funnel Design
Figure 3	Gate With Salamander Barrier	Figure 4	Knots
Figure 5	Corner and Angle Brace Fence	Figure 6	Gate Brace
Figure 7	Single Post Corner or Angle Brace Assembly		Jobwalk Sign-in Sheet

UNIVERSITY OF CALIFORNIA, MERCED

By: University of California, Merced

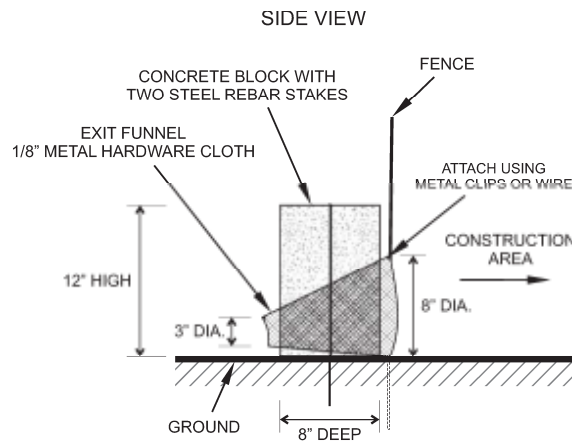
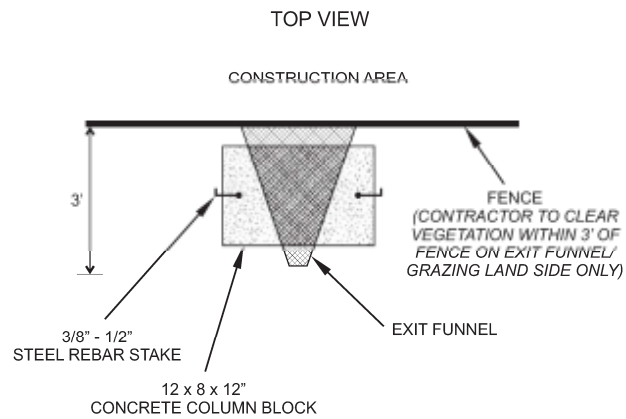
Fran Telechea
Interim Director of Construction and Inspection Services

End of Addendum No. 3



STANDARD 5 WIRE FENCE
with Metal Hardware Cloth for Salamander Exclusion

Figure 1



SALAMANDER EXIT FUNNEL DESIGN

Figure 2

The installation of the CTS exclusion barrier, fencing and associated components described above shall conform to the following figures and to the graphic included in Attachment A.

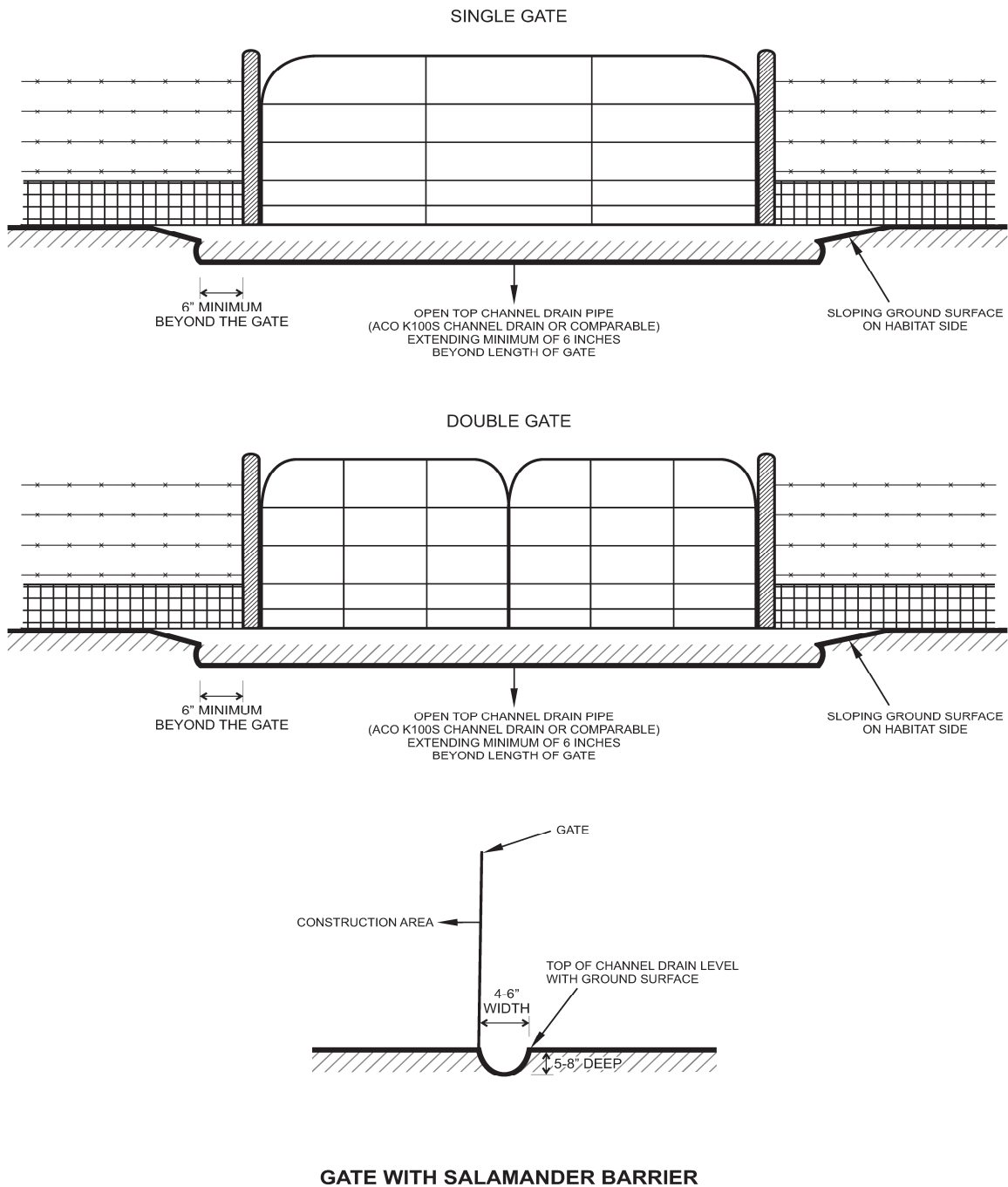
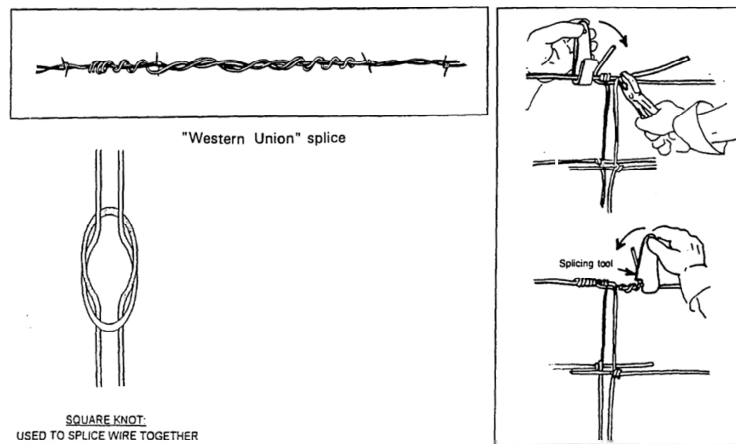
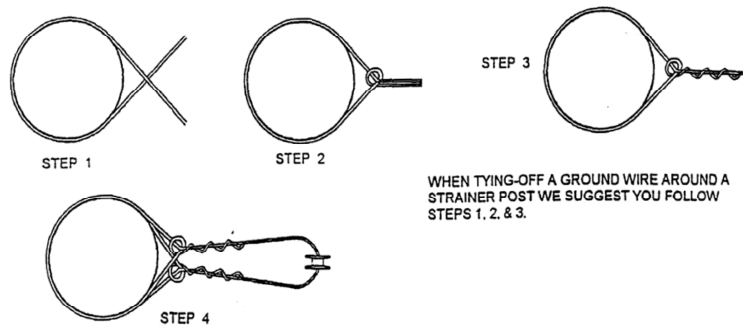


Figure 3



KNOTS

Figure 4

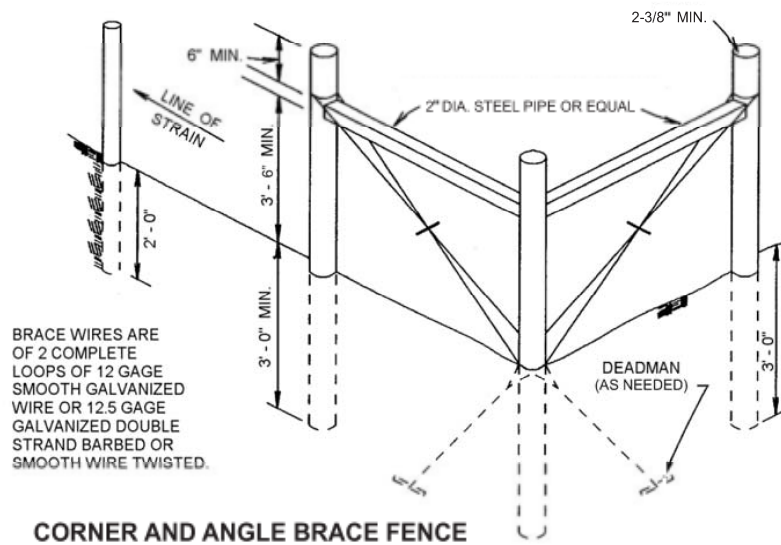


Figure 5

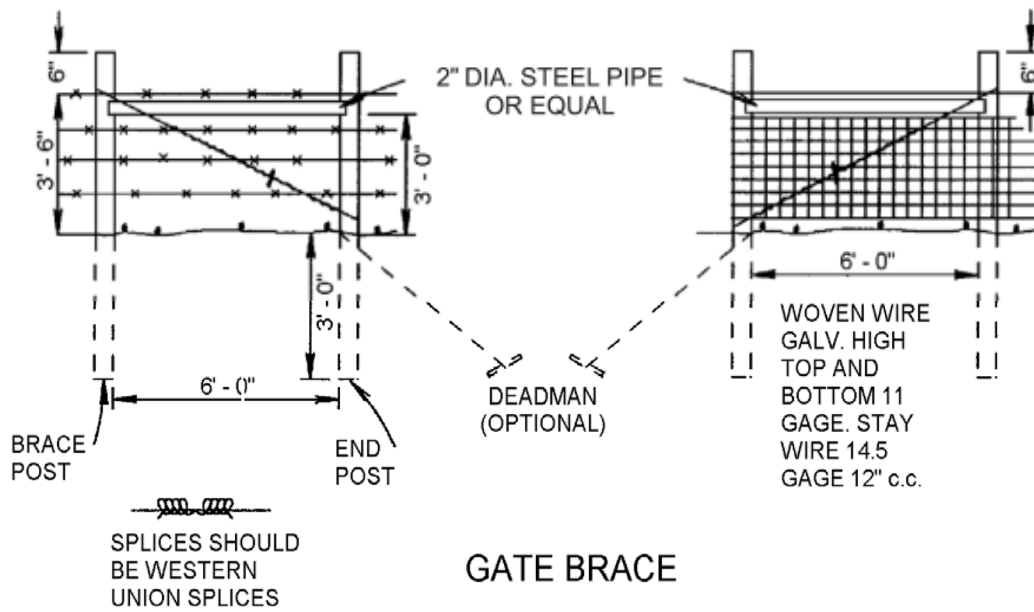
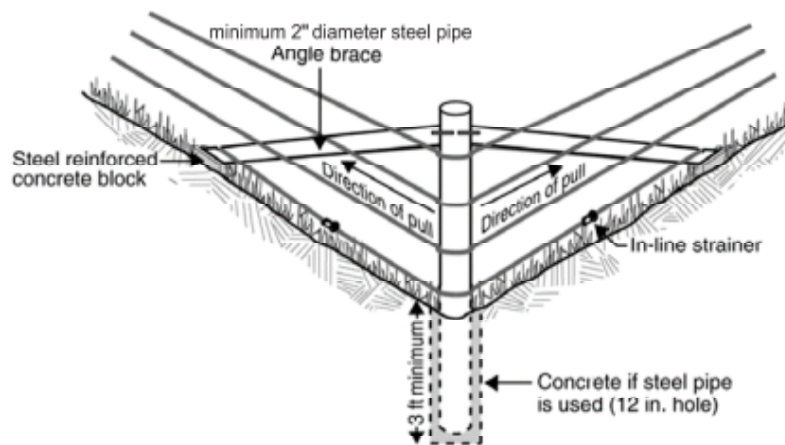


Figure 6



SINGLE POST CORNER OR ANGLE BRACE ASSEMBLY

Figure 7

9:00AM

University of California, Merced
CTS Fence
Mandatory Pre-Bid Job Walk

Name	Company	Email
Arthur Lawrence	LAWRENCE BECKHOE SERVICE	art@lawrencebeckhoe.com
ALEX TUVESON	SCS ENGINEERS	ATUVESON@SCSENGINEERS.COM
Shane Mehlig	Mess X Inc	MessX2@hotmail.com
Byron Price	Artisan Const	byron@artisanconstruction.com
Loren Rotsch	HRS	LKROTSCH@HRS.QUESTK.COM
George Karavan	OTTO Construction	gkaravan@ottoconstruction.com